

\$313,900 - 1131 Salina Street Se, Palm Bay

MLS® #1013875

\$313,900

3 Bedroom, 2.00 Bathroom, 1,270 sqft
Residential on 0.23 Acres

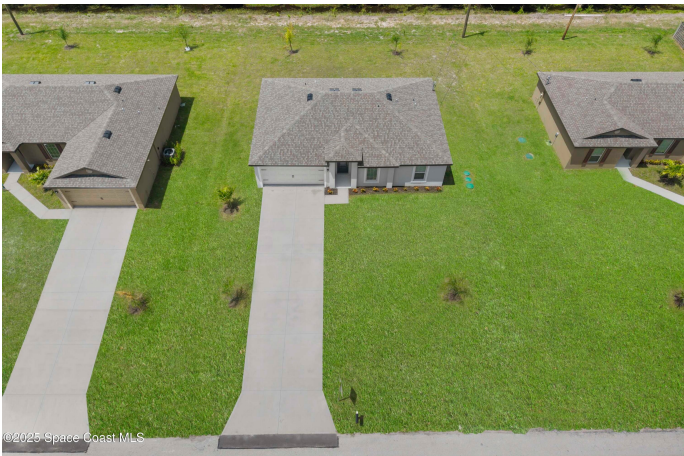
Port Malabar Unit 16, Palm Bay, FL

Ask us about our incentives, builder paid closing costs, & no down payment options! The Vero floor plan is a one story home that showcases an open-concept floor plan, 3 bedrooms and 2 full baths. The Vero comes fully stocked with over \$10,000 in upgrades including all new energy-efficient Whirlpool® appliances, granite countertops, brushed nickel hardware and an attached two car garage. Exceptional features of this home also include a spacious master suite, dining nook and front yard landscaping. In addition, Palm Bay offers residents a premier location with convenient access to nearby golf courses, world-class area beaches and amenity packed parks. This home is located near other new builds and is on a quiet road with a canal behind the home. **appliance models are subject to availability**

Built in 2025

Essential Information

MLS® #	1013875
Price	\$313,900
Bedrooms	3
Bathrooms	2.00
Full Baths	2
Square Footage	1,270
Acres	0.23
Year Built	2025



Type	Residential
Sub-Type	Single Family Residence
Style	Traditional
Status	Active

Community Information

Address	1131 Salina Street Se
Area	343 - SE Palm Bay
Subdivision	Port Malabar Unit 16
City	Palm Bay
County	Brevard
State	FL
Zip Code	32909

Amenities

Utilities	Cable Available, Electricity Available, Water Available
Parking	Attached, Covered, Garage, Garage Door Opener
# of Garages	2

Interior

Interior Features	Breakfast Bar, Breakfast Nook, Ceiling Fan(s), Open Floorplan, Pantry, Primary Bathroom - Shower No Tub, Smart Thermostat, Split Bedrooms, Walk-In Closet(s)
Appliances	Dishwasher, Disposal, Electric Oven, Electric Range, Electric Water Heater, Freezer, Ice Maker, Microwave, Refrigerator
Heating	Central
Cooling	Central Air
# of Stories	1
Stories	One

Exterior

Exterior	Block, Concrete, Stucco
Exterior Features	Storm Shutters
Lot Description	Sprinklers In Front, Sprinklers In Rear
Roof	Shingle
Construction	Block, Concrete, Stucco

School Information

Elementary	Turner
Middle	Southwest

High

Bayside

Listing Details

Listing Office

LGI Realty-Florida LLC

The information being provided by the Space Coast Association of REALTORS® is exclusively for consumers' personal, non-commercial use, and it may not be used for any purpose other than to identify prospective properties consumers may be interested in purchasing. The data is deemed reliable but is not guaranteed accurate by the MLS.