

\$454,860 - 7780 Cache Creek Lane, Melbourne

MLS® #1021631

\$454,860

3 Bedroom, 2.00 Bathroom, 1,481 sqft
Residential on 0.16 Acres

Avalonia, Melbourne, FL

The Lindsey II offers an excellent design and superb value. With 3 bedrooms, 2 baths and 2-car garage, this home is perfectly laid out. The open kitchen and great room overlook the large lanai, perfect for entertaining. The master suite includes a large walk-in closet and luxurious master bath. This home features a Patio Extension.



Built in 2024

Essential Information

MLS® #	1021631
Price	\$454,860
Bedrooms	3
Bathrooms	2.00
Full Baths	2
Square Footage	1,481
Acres	0.16
Year Built	2024
Type	Residential
Sub-Type	Townhouse
Status	Active

Community Information

Address	7780 Cache Creek Lane
Area	217 - Viera West of I 95
Subdivision	Avalonia
City	Melbourne
County	Brevard

State FL
Zip Code 32940

Amenities

Utilities Other
Parking Attached, Garage
of Garages 2

Interior

Interior Features Entrance Foyer, Pantry, Pri
Closet(s)
Appliances Convection Oven, Dishwashe
Heating Central
Cooling Central Air
of Stories 1

Exterior

Exterior Block, Stucco
Lot Description Other
Construction Block, Stucco

School Information

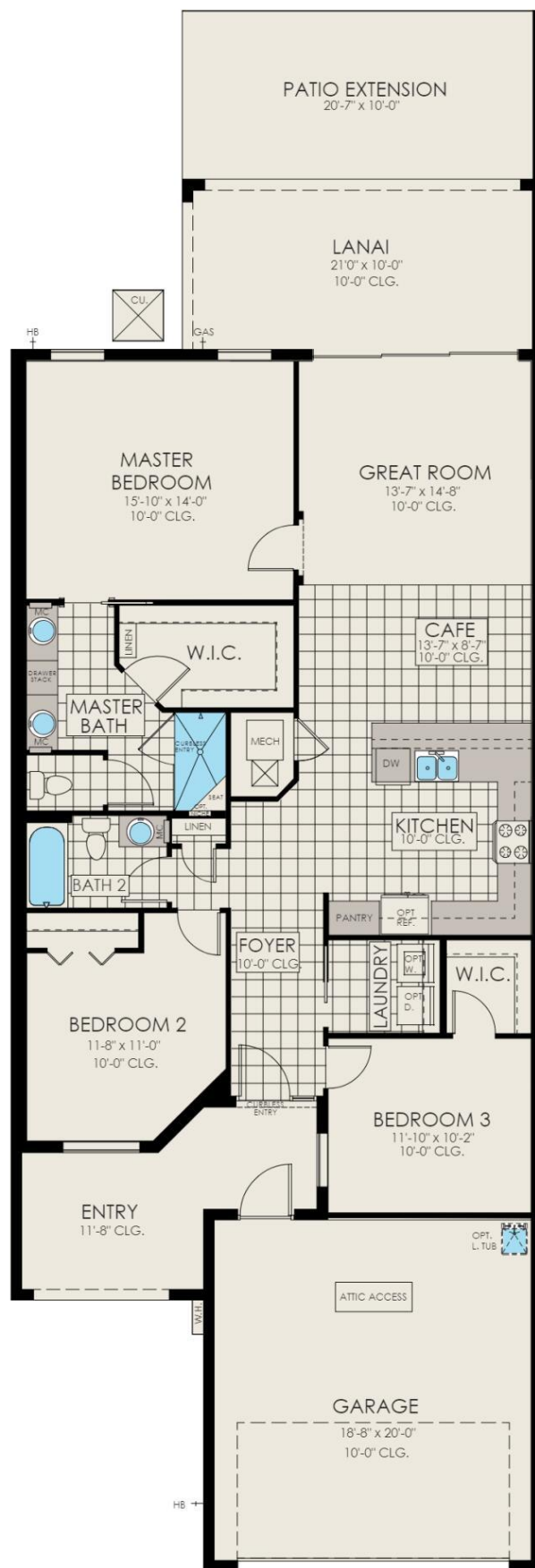
Elementary Viera
Middle Viera Middle School
High Viera

Additional Information

HOA Fees 433
HOA Fees Freq. Monthly

Listing Details

Listing Office Viera Builders Realty, Inc.



The information being provided by the Space Coast Association of REALTORS® is exclusively for consumers' personal, non-commercial use, and it may not be used for any purpose other than to identify prospective properties consumers

may be interested in purchasing. The data is deemed reliable but is not guaranteed accurate by the MLS.