

\$895,000 - 1173 Rivermont Drive, Melbourne

MLS® #1023605

\$895,000

5 Bedroom, 6.00 Bathroom, 4,710 sqft
Residential on 0.34 Acres

Rivermont Estates Subd, Melbourne, FL

Optimize your boating life with this spacious WATERFRONT pool home, featuring a private dock, seawall and 2 jet ski docks.

This property boasts 102 feet of waterfront on Spring Creek, leading to the Eau Gallie and Indian Rivers.

The property offers an assumable mortgage at a 2.875% INTEREST RATE.

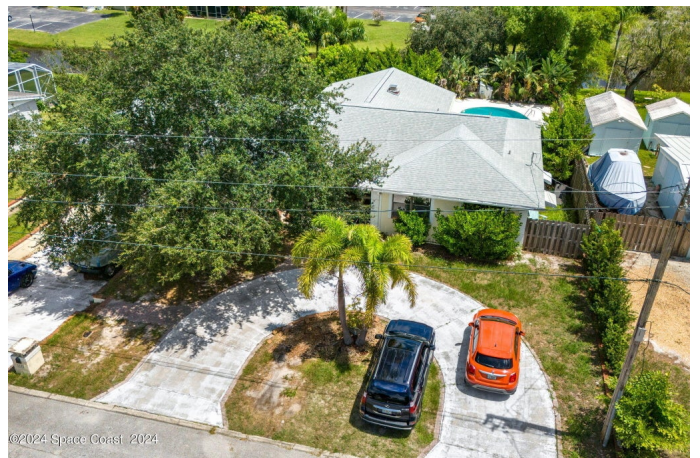
This sizable two-story, multi-generational home features two primary bedroom suites, including a separate in-law suite, a 25,000-gallon saltwater pool, and a 2019 roof and gutters.

Enjoy a pull-through two-car garage, circular driveway, and lush privacy with mature mango, avocado, fig, banana, and lime trees. The property also cash flows as a successful rental. Located in the NO HOA Rivermont Drive community, you're minutes from the Eau Gallie Arts District, beaches, and upscale dining like Frigates and Pineapples. With easy access to airports, the Space Center, Cocoa Beach, and Disney World, this home combines space, convenience, and investment potential.

Built in 1957

Essential Information

MLS® # 1023605



Price	\$895,000
Bedrooms	5
Bathrooms	6.00
Full Baths	6
Square Footage	4,710
Acres	0.34
Year Built	1957
Type	Residential
Sub-Type	Single Family Residence
Status	Active

Community Information

Address	1173 Rivermont Drive
Area	323 - Eau Gallie
Subdivision	Rivermont Estates Subd
City	Melbourne
County	Brevard
State	FL
Zip Code	32935

Amenities

Utilities	Cable Connected, Electricity Connected, Sewer Connected, Water Connected
Parking	Additional Parking, Attached, Circular Driveway, Garage
# of Garages	2
View	Canal, Pool, River, Water, Intracoastal
Is Waterfront	Yes
Waterfront	Canal Front, Navigable Water, River Access, Seawall, Intracoastal
Has Pool	Yes
Pool	Fenced, In Ground

Interior

Interior Features	Ceiling Fan(s), Kitchen Island, Open Floorplan, Split Bedrooms
Appliances	Dishwasher, Gas Range, Microwave, Refrigerator
Heating	Central, Electric
Cooling	Central Air, Electric
Fireplace	Yes
# of Fireplaces	2
Fireplaces	Gas

# of Stories	2
Stories	Two

Exterior

Exterior	Block, Concrete, Stucco
Exterior Features	Balcony, Dock
Lot Description	Many Trees
Roof	Shingle
Construction	Block, Concrete, Stucco

School Information

Elementary	Croton
Middle	Johnson
High	Eau Gallie

Listing Details

Listing Office	Compass Florida LLC
----------------	---------------------

The information being provided by the Space Coast Association of REALTORS® is exclusively for consumers' personal, non-commercial use, and it may not be used for any purpose other than to identify prospective properties consumers may be interested in purchasing. The data is deemed reliable but is not guaranteed accurate by the MLS.