

# \$798,000 - 750 W Whitmire Drive, Melbourne

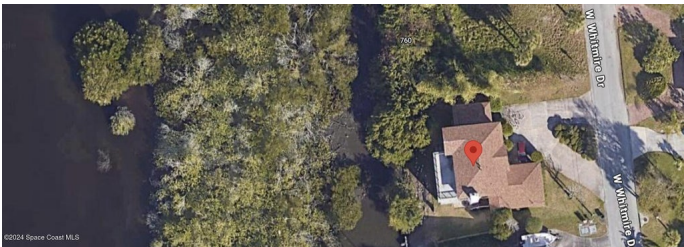
MLS® #1028894

## \$798,000

5 Bedroom, 3.00 Bathroom, 3,086 sqft  
Residential on 0.48 Acres

Loveridge Heights Subd, Melbourne, FL

Welcome to Ballard Park, one of Melbourne's most desirable neighborhoods! This fully updated 5-bedroom, 3-bath home offers spacious living with scenic views from every room and direct canal access, perfect for building your dream dock for boat storage. The brand-new kitchen boasts modern appliances, and all three bathrooms have been stylishly updated. The master suite opens onto a second-floor balcony, offering a private retreat. Enjoy a cozy step-down living room and a versatile bonus area downstairs, ideal for dining, relaxing, or entertaining. With vinyl flooring throughout the downstairs, a two-car garage, and no HOA, this home is a gem. Plus, it's just a short walk to Ballard Park's tennis courts, fishing spots, boat ramp, and kayak launch, and a quick drive to shopping, dining, Downtown Eau Gallie, Downtown Melbourne, and the beaches. Make this beautiful home yours!



Built in 1980

## Essential Information

MLS® #	1028894
Price	\$798,000
Bedrooms	5
Bathrooms	3.00
Full Baths	3
Square Footage	3,086
Acres	0.48

Year Built	1980
Type	Residential
Sub-Type	Single Family Residence
Status	Active

### Community Information

Address	750 W Whitmire Drive
Area	323 - Eau Gallie
Subdivision	Loveridge Heights Subd
City	Melbourne
County	Brevard
State	FL
Zip Code	32935

### Amenities

Utilities	Cable Available, Electricity Connected, Sewer Connected, Water Connected
Parking	Garage
# of Garages	2
View	Canal
Is Waterfront	Yes
Waterfront	Canal Front, River Front

### Interior

Interior Features	Eat-in Kitchen, Pantry, Primary Bathroom - Tub with Shower, Walk-In Closet(s), Wet Bar
Appliances	Dishwasher, Disposal, Electric Range, Electric Water Heater, Ice Maker, Microwave, Refrigerator
Heating	Central, Electric
Cooling	Central Air, Electric
Fireplace	Yes
# of Fireplaces	1
# of Stories	2

### Exterior

Exterior	Frame, Stucco
Exterior Features	Balcony
Lot Description	Cleared
Roof	Shingle

Construction            Frame, Stucco

**School Information**

Elementary            Harbor City  
Middle                Hoover  
High                    Melbourne

**Listing Details**

Listing Office            Arium Real Estate, LLC

The information being provided by the Space Coast Association of REALTORS® is exclusively for consumers' personal, non-commercial use, and it may not be used for any purpose other than to identify prospective properties consumers may be interested in purchasing. The data is deemed reliable but is not guaranteed accurate by the MLS.