

# \$533,670 - 3038 Pangea Circle, Melbourne

MLS® #1029387

**\$533,670**

2 Bedroom, 2.00 Bathroom, 1,921 sqft  
Residential on 0.15 Acres

Pangea Park, Melbourne, FL

The Sapphire is a gorgeous 3 bedroom, 2 bath home with an open kitchen into the Great Room and Café. The Primary bedroom with stepped ceilings is beautiful and the double vanity bathroom and walk in closet are spacious. An optional wine bar in the Great Room make this home perfect for entertaining. This home features a Study in lieu of Bedroom 3.



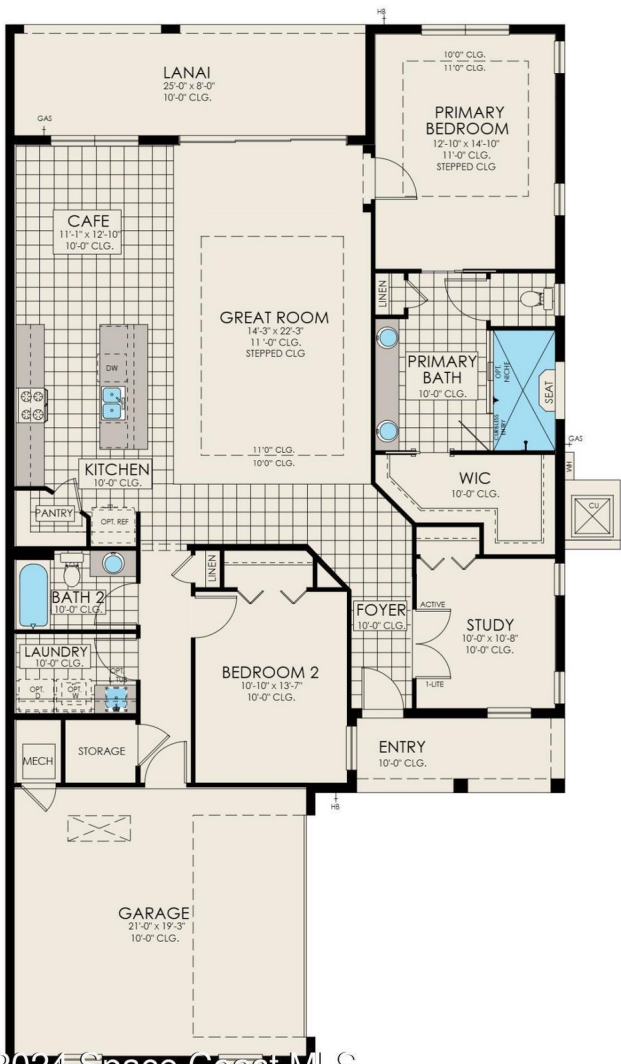
Built in 2024

## Essential Information

MLS® #	1029387
Price	\$533,670
Bedrooms	2
Bathrooms	2.00
Full Baths	2
Square Footage	1,921
Acres	0.15
Year Built	2024
Type	Residential
Sub-Type	Townhouse
Status	Active

## Community Information

Address	3038 Pangea Circle
Area	320 - Pineda/Lake Washington
Subdivision	Pangea Park
City	Melbourne



County	Brevard
State	FL
Zip Code	32940

### **Amenities**

Utilities	Other
Parking	Attached, Garage
# of Garages	2

### **Interior**

Interior Features	Entrance Foyer, Pantry, Primary Bathroom - Shower No Tub, Walk-In Closet(s)
Appliances	Convection Oven, Dishwasher, Gas Range
Heating	Central
Cooling	Central Air
# of Stories	1

### **Exterior**

Exterior	Block, Stucco
Lot Description	Other
Construction	Block, Stucco

### **School Information**

Elementary	Viera
Middle	Viera Middle School
High	Viera

### **Additional Information**

HOA Fees	1480
HOA Fees Freq.	Quarterly

### **Listing Details**

Listing Office	Viera Builders Realty, Inc.
----------------	-----------------------------

The information being provided by the Space Coast Association of REALTORS® is exclusively for consumers' personal, non-commercial use, and it may not be used for any purpose other than to identify prospective properties consumers may be interested in purchasing. The data is deemed reliable but is not guaranteed accurate by the MLS.