

\$385,000 - 200 Circle Avenue, Melbourne

MLS® #1040709

\$385,000

3 Bedroom, 3.00 Bathroom, 1,945 sqft

Residential on 0.11 Acres

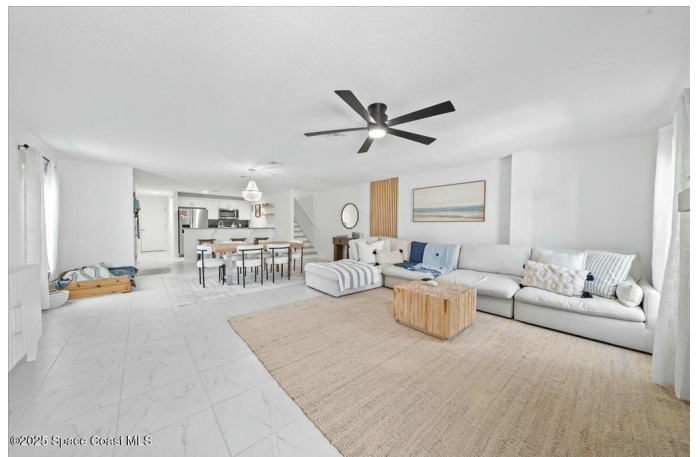
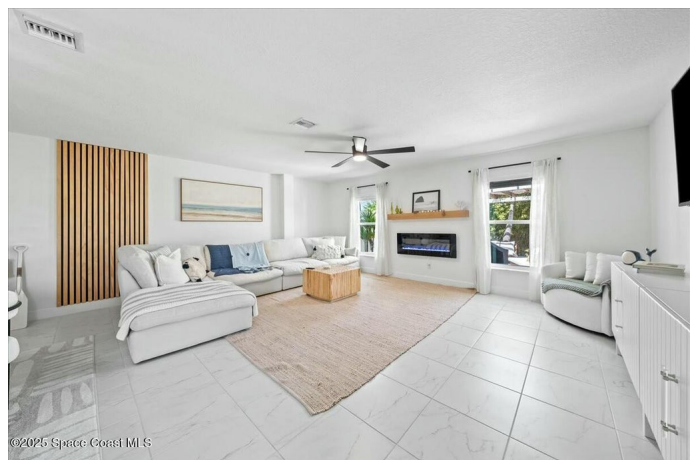
None, Melbourne, FL

No rental restrictions make this stunning townhome a fantastic opportunity! Modern elegance abounds w/ LVP floors throughout, including the staircase, creating a seamless flow. The open-concept kitchen, dining & living area feature sleek finishes, accent walls & a cozy electric fireplace. Fully furnished & meticulously decorated, this home is move-in ready. Step outside to your private oasis w/ a pergola, fire pit & hot tub, surrounded by Areca & foxtail palms. The fully fenced yard, w/ white vinyl picket & 6' privacy fencing, is perfect for relaxing or entertaining. Combining style, comfort & tranquility, this home offers an exceptional living experience. Ideally located in the heart of Melbourne, you're just 10 min. from Downtown, the Eau Gallie Arts District, I-95 & local beaches, giving you the best of city & coastal life.

Built in 2021

Essential Information

| | |
|----------------|-----------|
| MLS® # | 1040709 |
| Price | \$385,000 |
| Bedrooms | 3 |
| Bathrooms | 3.00 |
| Full Baths | 2 |
| Half Baths | 1 |
| Square Footage | 1,945 |
| Acres | 0.11 |



| | |
|------------|-------------|
| Year Built | 2021 |
| Type | Residential |
| Sub-Type | Townhouse |
| Status | Active |

Community Information

| | |
|-------------|-------------------|
| Address | 200 Circle Avenue |
| Area | 323 - Eau Gallie |
| Subdivision | None |
| City | Melbourne |
| County | Brevard |
| State | FL |
| Zip Code | 32935 |

Amenities

| | |
|--------------|--------------------------------------|
| Utilities | Electricity Connected |
| Parking | Attached, Garage, Garage Door Opener |
| # of Garages | 1 |

Interior

| | |
|-------------------|--|
| Interior Features | Breakfast Bar, Breakfast Nook, Ceiling Fan(s), Open Floorplan, Pantry, Split Bedrooms, Walk-In Closet(s) |
| Appliances | Dishwasher, Disposal, Electric Range, Electric Water Heater, Ice Maker, Microwave, Refrigerator |
| Heating | Central, Electric |
| Cooling | Central Air |
| Fireplace | Yes |
| # of Fireplaces | 1 |
| Fireplaces | Electric |
| # of Stories | 2 |
| Stories | Two |

Exterior

| | |
|-------------------|-------------------------|
| Exterior | Block, Concrete, Stucco |
| Exterior Features | Balcony |
| Lot Description | Corner Lot |
| Roof | Shingle |
| Construction | Block, Concrete, Stucco |

School Information

| | |
|------------|-------------|
| Elementary | Harbor City |
| Middle | Hoover |
| High | Melbourne |

Additional Information

| | |
|----------------|---------|
| HOA Fees | 200 |
| HOA Fees Freq. | Monthly |

Listing Details

| | |
|----------------|------------------|
| Listing Office | RE/MAX Solutions |
|----------------|------------------|

The information being provided by the Space Coast Association of REALTORS® is exclusively for consumers' personal, non-commercial use, and it may not be used for any purpose other than to identify prospective properties consumers may be interested in purchasing. The data is deemed reliable but is not guaranteed accurate by the MLS.