

\$754,900 - 1208 E River Drive 401, Melbourne

MLS® #1041182

\$754,900

3 Bedroom, 2.00 Bathroom, 1,898 sqft
Residential on 0.08 Acres

Crane Cliff, Melbourne, FL

Welcome to Captain's Cove, an exclusive gated waterfront community. This rarely available, recently remodeled 3-bedroom home offers stunning views of the marina and picturesque causeway. The open floor plan is bathed in natural light, with breathtaking water views throughout. A blend of bamboo flooring and tile, paired with a freshly painted interior, creates a warm, elegant atmosphere.

The spacious primary suite with an ensuite offers versatility, perfect for a sitting area or home office. The well-appointed kitchen features ample granite countertop space for meal prep, entertaining, or simply enjoying the view. Additional highlights include breakfast bar seating, a unique bar sink, a cozy fireplace in the living area, and porthole windows adding to the nautical charm.

Enjoy tranquil waters, vibrant maritime surroundings, and frequent visits from manatees and dolphins. This home also includes 2 DEEDED BOAT SLIPS, an oversized one-car garage, 1 extra parking, and a private storage.

FACTS:

Boat slips: D15 & D-4 (Currently rented \$300 & \$275 per Mo.)

Private Storage Locker S-7

Garage 401 & uncovered reserved space 401

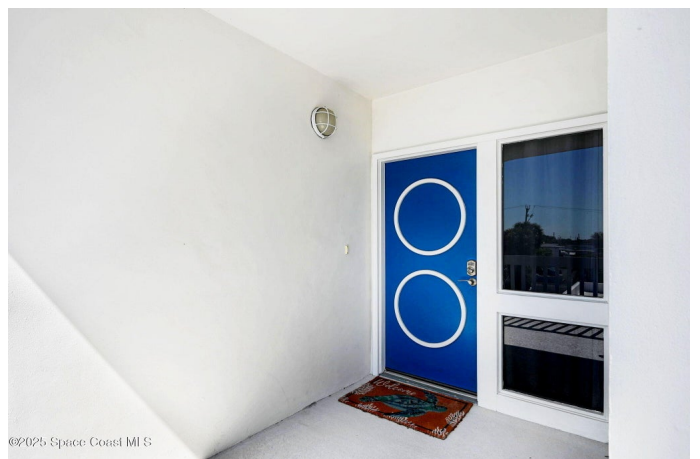
First Right of refusal- 15 days

Rentals 3 Month minimum (Recent change)

Exclusive community with only 10 units

New A/C system

Building info:



Gated community
Association managed by Tower Management
Recent renovations in 2023 include: Docks,
Elevator, Roof
Structural Integrity Reserve Study (SIRS) was
successfully completed.

Built in 1984

Essential Information

MLS® #	1041182
Price	\$754,900
Bedrooms	3
Bathrooms	2.00
Full Baths	2
Square Footage	1,898
Acres	0.08
Year Built	1984
Type	Residential
Sub-Type	Condominium
Style	Contemporary
Status	Active

Community Information

Address	1208 E River Drive 401
Area	330 - Melbourne - Central
Subdivision	Crane Cliff
City	Melbourne
County	Brevard
State	FL
Zip Code	32901

Amenities

Amenities	Boat Dock, Boat Slip, Cable TV, Car Wash Area, Elevator(s), Gated, Maintenance Grounds, Maintenance Structure, Storage, Trash
Utilities	Cable Connected, Electricity Connected, Water Connected
Parking	Additional Parking, Assigned, Garage, Garage Door Opener, Gated
# of Garages	1
View	Bridge(s), Marina, River, Water, Intracoastal

Is Waterfront	Yes
Waterfront	River Front

Interior

Interior Features	Breakfast Bar, Ceiling Fan(s), Kitchen Island, Open Floorplan, Pantry, Primary Bathroom -Tub with Separate Shower, Wet Bar
Appliances	Dishwasher, Disposal, Double Oven, Dryer, Electric Cooktop, Electric Oven, Electric Water Heater, Microwave, Refrigerator, Washer
Heating	Central
Cooling	Central Air, Electric
Fireplace	Yes
# of Fireplaces	1
# of Stories	1
Stories	One

Exterior

Exterior	Concrete
Lot Description	Historic Area
Roof	Membrane
Construction	Concrete

School Information

Elementary	University Park
Middle	Stone
High	Melbourne

Additional Information

HOA Fees	750
HOA Fees Freq.	Monthly

Listing Details

Listing Office	RE/MAX Aerospace Realty
----------------	-------------------------

The information being provided by the Space Coast Association of REALTORS® is exclusively for consumers' personal, non-commercial use, and it may not be used for any purpose other than to identify prospective properties consumers may be interested in purchasing. The data is deemed reliable but is not guaranteed accurate by the MLS.