

\$394,000 - 527 Glaspell Circle Se, Palm Bay

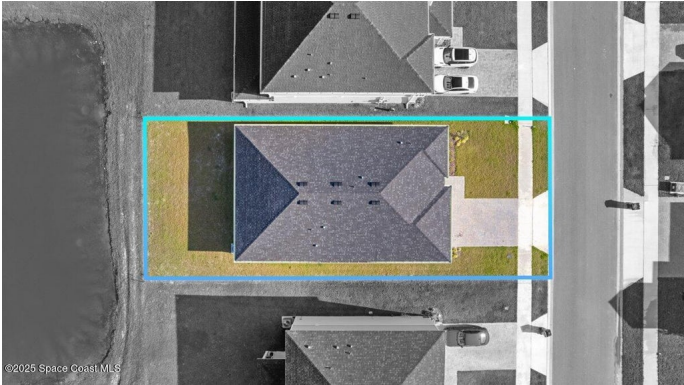
MLS® #1042850

\$394,000

4 Bedroom, 2.00 Bathroom, 1,989 sqft
Residential on 0.16 Acres

Gardens at Waterstone, Palm Bay, FL

Built in 2024 and loaded with upgrades, this home in The Gardens of Waterstone is the kind of place that makes you stop and say, "Yep, this is it." From the moment you walk in, you'll notice the clean, modern vibe. Luxury vinyl plank floors run throughout the home, tying everything together with a sleek, seamless flow. And then there's the kitchen: bright, sharp, and designed to actually be used. We're talking 36" white upper cabinets, granite countertops, an island, matte black hardware, a bold Moen faucet, and yes, stainless steel appliances are all included. This home offers a spacious open floor plan, perfect for both daily living and entertaining. Plus, the split floor plan ensures privacy and convenience for the whole family. This home is energy-efficient, protected by a Schneider Electric whole-home surge protector, and already has full house gutters installed. You get the benefits of new construction, without the wait.



Built in 2024

Essential Information

MLS® #	1042850
Price	\$394,000
Bedrooms	4
Bathrooms	2.00
Full Baths	2
Square Footage	1,989

Acres	0.16
Year Built	2024
Type	Residential
Sub-Type	Single Family Residence
Status	Active

Community Information

Address	527 Glaspell Circle Se
Area	343 - SE Palm Bay
Subdivision	Gardens at Waterstone
City	Palm Bay
County	Brevard
State	FL
Zip Code	32909

Amenities

Amenities	Clubhouse, Gated, Pickleball, Playground, Pool
Utilities	Cable Connected, Electricity Connected, Sewer Connected, Water Connected
Parking	Attached, Garage
# of Garages	2
View	Pond

Interior

Interior Features	Eat-in Kitchen, Kitchen Island, Open Floorplan, Smart Home, Split Bedrooms, Walk-In Closet(s)
Appliances	Convection Oven, Dishwasher, Electric Range, Microwave, Refrigerator
Heating	Central
Cooling	Central Air
# of Stories	1
Stories	One

Exterior

Exterior	Block, Stucco
Exterior Features	Storm Shutters
Lot Description	Other
Roof	Shingle
Construction	Block, Stucco

School Information

Elementary	Sunrise
Middle	Southwest
High	Bayside

Additional Information

HOA Fees	275
HOA Fees Freq.	Quarterly

Listing Details

Listing Office	Blue Marlin Real Estate
----------------	-------------------------

The information being provided by the Space Coast Association of REALTORS® is exclusively for consumers' personal, non-commercial use, and it may not be used for any purpose other than to identify prospective properties consumers may be interested in purchasing. The data is deemed reliable but is not guaranteed accurate by the MLS.