

# \$419,000 - 2804 Whistler Street, Melbourne

MLS® #1044835

**\$419,000**

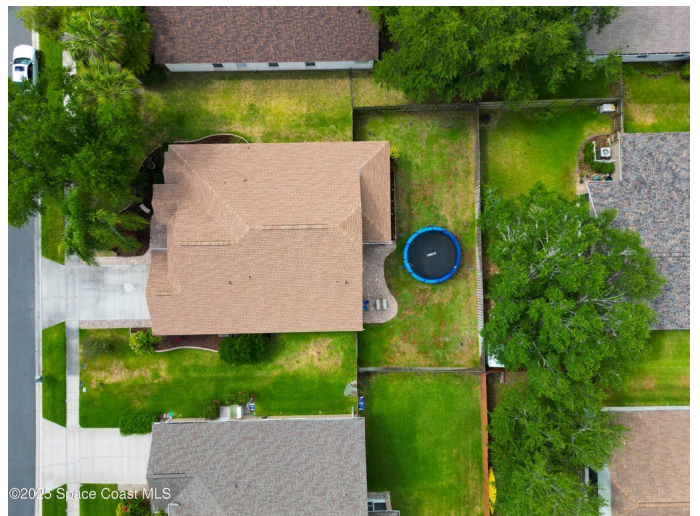
4 Bedroom, 2.00 Bathroom, 2,007 sqft  
Residential on 0.20 Acres

Westbrooke Phase II, Melbourne, FL

Welcome to your new home in the desirable Westbrook community! This beautifully maintained property offers the perfect blend of comfort and updates, including a 2020 roof, freshly repainted exterior, and brand-new plumbing extended to the street. Inside, enjoy an updated kitchen with modern finishes and an open layout that flows seamlessly into the living space. Step outside to a spacious screened porch, fully fenced backyard with paver patio—perfect for relaxing, entertaining, or letting pets roam free. Located just minutes from Publix, Target, Kohl's, and an array of restaurants, plus close to top-rated schools, this home offers everyday convenience in a great neighborhood. Don't miss the opportunity to own a move-in ready home in one of the area's most sought-after communities. Schedule your showing today! you could ask for Publix, Target, Kohl's, and a wide variety of restaurants are all nearby. Close proximity to A-rated schools, making this a smart move for those with education in mind. Whether you're a first-time homebuyer, downsizing, or simply looking for a well-cared-for home in a fantastic location, this property checks all the boxes. Schedule your private showing today and come see why so many love calling Westbrooke home!

Built in 2000

## Essential Information



MLS® #	1044835
Price	\$419,000
Bedrooms	4
Bathrooms	2.00
Full Baths	2
Square Footage	2,007
Acres	0.20
Year Built	2000
Type	Residential
Sub-Type	Single Family Residence
Status	Active

### Community Information

Address	2804 Whistler Street
Area	331 - West Melbourne
Subdivision	Westbrooke Phase II
City	Melbourne
County	Brevard
State	FL
Zip Code	32904

### Amenities

Amenities	Maintenance Grounds, Management - Off Site, Playground, Pool
Utilities	Cable Connected, Electricity Connected, Sewer Connected
Parking	Garage
# of Garages	2

### Interior

Interior Features	Breakfast Bar, Breakfast Nook, His and Hers Closets, Primary Bathroom -Tub with Separate Shower, Split Bedrooms, Vaulted Ceiling(s), Walk-In Closet(s)
Appliances	Dishwasher, Disposal, Dryer, Electric Range, Electric Water Heater, Microwave, Refrigerator, Washer
Heating	Central
Cooling	Central Air
# of Stories	1
Stories	One

### Exterior

Exterior	Block
Lot Description	Other
Roof	Shingle
Construction	Block

### **School Information**

Elementary	Meadowlane
Middle	Central
High	Melbourne

### **Additional Information**

HOA Fees	125
HOA Fees Freq.	Quarterly

### **Listing Details**

Listing Office	ITG Realty
----------------	------------

The information being provided by the Space Coast Association of REALTORS® is exclusively for consumers' personal, non-commercial use, and it may not be used for any purpose other than to identify prospective properties consumers may be interested in purchasing. The data is deemed reliable but is not guaranteed accurate by the MLS.