

# \$605,080 - 7750 Allure Drive, Melbourne

MLS® #1044938

**\$605,080**

4 Bedroom, 4.00 Bathroom, 2,303 sqft  
Residential on 0.09 Acres

Reeling Park, Melbourne, FL

This elegant and spacious Merida II features 4 bedrooms, a large great room with 9' slider and open kitchen and cafe overlooking a generous lanai and courtyard.



©2025 Space Coast MLS

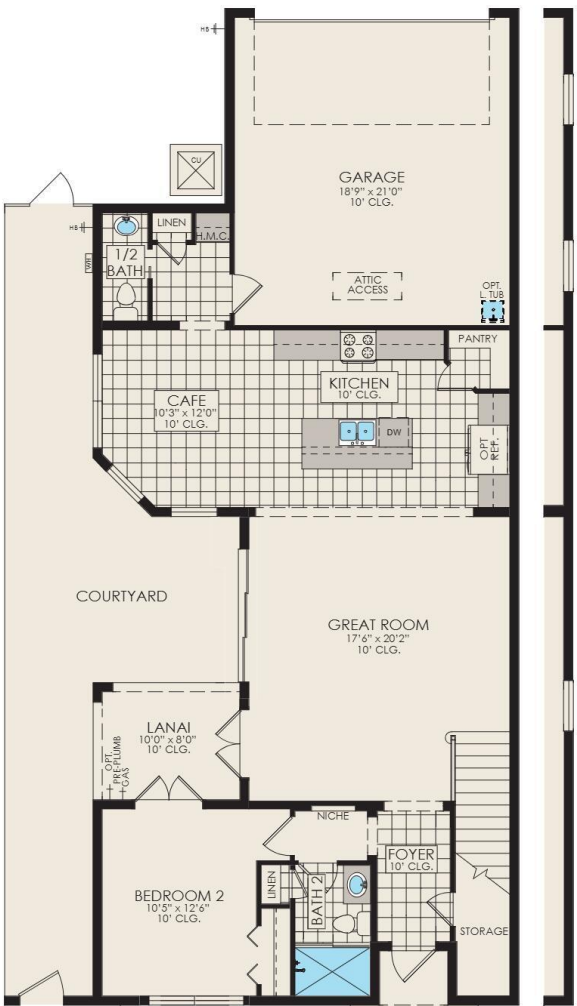
Built in 2025

## Essential Information

MLS® #	1044938
Price	\$605,080
Bedrooms	4
Bathrooms	4.00
Full Baths	3
Half Baths	1
Square Footage	2,303
Acres	0.09
Year Built	2025
Type	Residential
Sub-Type	Single Family Residence
Status	Active

## Community Information

Address	7750 Allure Drive
Area	217 - Viera West of I 95
Subdivision	Reeling Park
City	Melbourne
County	Brevard
State	FL
Zip Code	32940



©2025 Space Coast MLS

\*Windows  
Required on  
End Unit

## Amenities

Utilities	Other
Parking	Attached, Garage
# of Garages	2

## Interior

Interior Features	Entrance Foyer, His and Hers Closets, Jack and Jill Bath, Pantry, Primary Bathroom - Shower No Tub, Split Bedrooms, Walk-In Closet(s)
Appliances	Convection Oven, Dishwasher, Gas Range
Heating	Central
Cooling	Central Air
# of Stories	2

## Exterior

Exterior	Block, Stucco, Other
Exterior Features	Balcony, Courtyard
Lot Description	Other
Construction	Block, Stucco, Other

## School Information

Elementary	Quest
Middle	Viera Middle School
High	Viera

## Additional Information

HOA Fees	585
HOA Fees Freq.	Quarterly

## Listing Details

Listing Office	Viera Builders Realty, Inc.
----------------	-----------------------------

The information being provided by the Space Coast Association of REALTORS® is exclusively for consumers' personal, non-commercial use, and it may not be used for any purpose other than to identify prospective properties consumers may be interested in purchasing. The data is deemed reliable but is not guaranteed accurate by the MLS.