

# \$598,000 - 1500 S Harbor Drive, Merritt Island

MLS® #1050352

**\$598,000**

3 Bedroom, 2.00 Bathroom, 1,768 sqft  
Residential on 0.18 Acres

Surfside Estates Unit 3, Merritt Island, FL

Larger dock install available & recently approved only 7.5k & neighbor approval for a co-join dock! Remodeled 3/2 on a spacious corner lot canal front property featuring brand new AC ducts, all PVC sewer lines & PEX water supply lines, hurricane shutters on all windows & sliders, new pavers & a hot tub! Roof & AC units 2017. Hard to find this amount of lot space canal front!

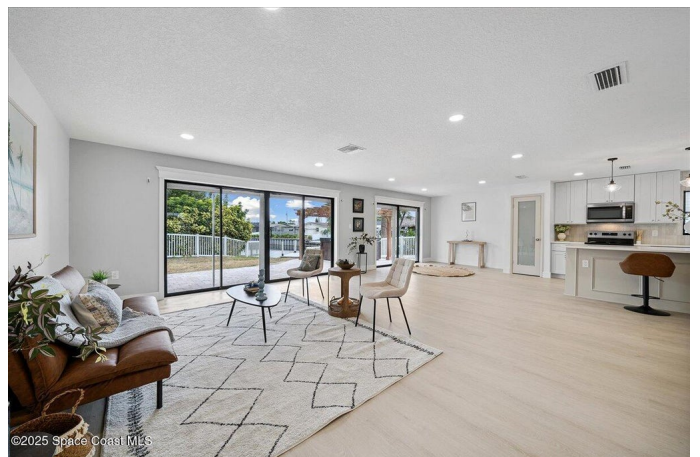
Built in 1966

## Essential Information

MLS® #	1050352
Price	\$598,000
Bedrooms	3
Bathrooms	2.00
Full Baths	2
Square Footage	1,768
Acres	0.18
Year Built	1966
Type	Residential
Sub-Type	Single Family Residence
Status	Active

## Community Information

Address	1500 S Harbor Drive
Area	252 - N Banana River Dr.
Subdivision	Surfside Estates Unit 3
City	Merritt Island



County	Brevard
State	FL
Zip Code	32952

### **Amenities**

Utilities	Natural Gas Connected, Sewer Connected
Parking	Attached, Garage
# of Garages	2
View	Canal
Is Waterfront	Yes
Waterfront	Canal Front, River Access

### **Interior**

Interior Features	Breakfast Bar, Open Floorplan, Walk-In Closet(s)
Appliances	Dishwasher, Disposal, Gas Oven, Gas Water Heater, Microwave, Refrigerator
Heating	Central
Cooling	Central Air
# of Stories	1

### **Exterior**

Exterior	Block, Stucco
Lot Description	Corner Lot, Sprinklers In Front, Sprinklers In Rear
Roof	Shingle
Construction	Block, Stucco

### **School Information**

Elementary	Audubon
Middle	Jefferson
High	Merritt Island

### **Listing Details**

Listing Office	Relentless Real Estate Co.
----------------	----------------------------

The information being provided by the Space Coast Association of REALTORS® is exclusively for consumers' personal, non-commercial use, and it may not be used for any purpose other than to identify prospective properties consumers may be interested in purchasing. The data is deemed reliable but is not guaranteed accurate by the MLS.