

\$539,000 - 415 2nd Avenue, Indialantic

MLS® #1050815

\$539,000

2 Bedroom, 1.00 Bathroom, 1,420 sqft

Residential on 0.23 Acres

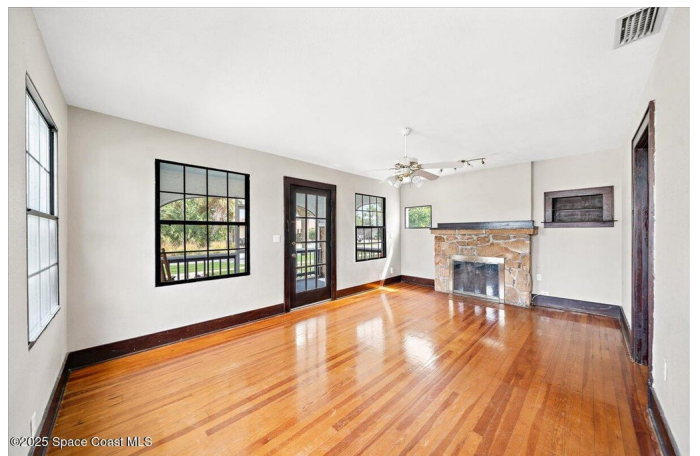
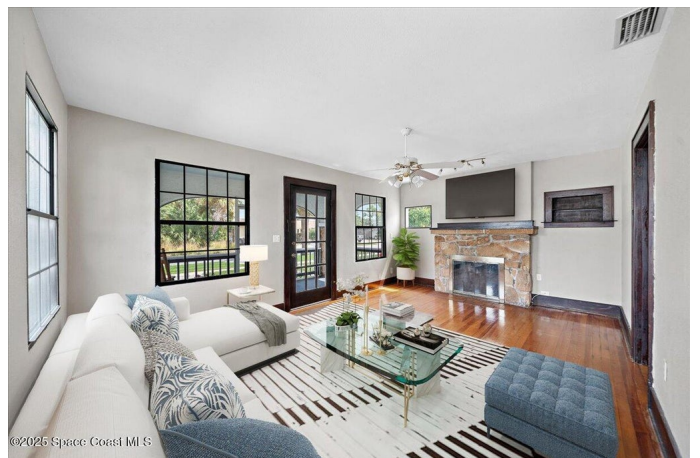
Indialantic By The Sea, Indialantic, FL

One of the 1st homes ever built on the Barrier Island. This Beachside Bungalow has been well cared for and is ready for the next owner interested in owning a piece of our area's history ! Premium location in the heart of Indialantic by the Sea, just a short stroll to enjoy panoramic River views at Indialantic's Sunset park and community pier on one end and Nance Park and the beautiful, white sand beaches on the shores of the Atlantic Ocean on the other. Multiple great dining options also within minutes of the home. Spacious, screened front porch, large storage building (original garage), beautiful Oak floors, option to add a 2nd bath upstairs (plumbing infrastructure already in place), transferable termite bond, lots of room to expand on the property and much more to love about this historic property. Call today for your private tour !

Built in 1924

Essential Information

MLS® #	1050815
Price	\$539,000
Bedrooms	2
Bathrooms	1.00
Full Baths	1
Square Footage	1,420
Acres	0.23
Year Built	1924



Type	Residential
Sub-Type	Single Family Residence
Style	Craftsman
Status	Active

Community Information

Address	415 2nd Avenue
Area	383 - N Indialantic
Subdivision	Indialantic By The Sea
City	Indialantic
County	Brevard
State	FL
Zip Code	32903

Amenities

Utilities	Cable Connected, Electricity Connected, Sewer Connected, Water Connected
Parking	Off Street

Interior

Interior Features	Primary Bathroom - Tub with Shower, Primary Downstairs
Appliances	Dishwasher, Dryer, Electric Range, Electric Water Heater, Refrigerator, Washer
Heating	Central, Electric
Cooling	Central Air, Electric
Fireplace	Yes
# of Fireplaces	1
Fireplaces	Wood Burning
# of Stories	2
Stories	Two

Exterior

Exterior	Frame
Exterior Features	Other
Lot Description	Other
Roof	Shingle
Construction	Frame

School Information

Elementary	Indialantic
Middle	Hoover
High	Melbourne

Listing Details

Listing Office One Sotheby's International

The information being provided by the Space Coast Association of REALTORS® is exclusively for consumers' personal, non-commercial use, and it may not be used for any purpose other than to identify prospective properties consumers may be interested in purchasing. The data is deemed reliable but is not guaranteed accurate by the MLS.