

\$1,074,982 - 2835 Highway A1a N 504, Indialantic

MLS® #1051269

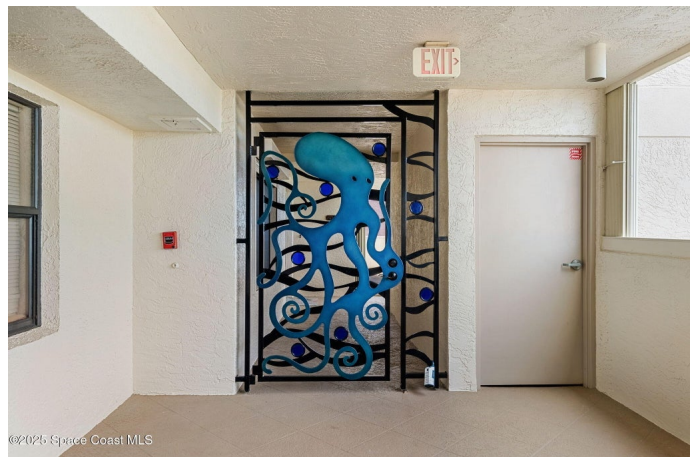
\$1,074,982

3 Bedroom, 2.00 Bathroom, 2,077 sqft
Residential on 0.06 Acres

Sandy Kaye Condo, Indialantic, FL

Modern Oceanfront Luxury with Wraparound Views! Experience coastal living at its finest in this breathtaking southeast corner oceanfront condo, perched on 5th floor with unobstructed, panoramic views that will leave you speechless. Designed to feel like you're floating on a cruise ship, this light-filled residence features floor-to-ceiling glass sliders and a 40-foot wraparound balcony, capturing the endless blues of the Atlantic from nearly every angle. No detail was overlooked when the sellers completely gutted the unit down to the studs, opening walls to create a modern, open-concept layout that maximizes natural light and ocean vistas the moment you walk through the door. The result is a stunning, serene space with floated, hand-polished travertine floors, raised ceilings, and designer finishes throughout. The chef's kitchen is a showstopper—oversized and open to the view, with a large breakfast bar that seats seven, perfect for entertaining against a backdrop of crashing waves. The primary suite is a sunrise dream, glowing with morning light and the soothing sound of the ocean just outside your window. Step outside in the evening and stroll along the beach to one of the nearby oceanfront restaurants for dinner or cocktails. Watch sea turtles nest, fall asleep to the sound of the surf, and wake up feeling refreshed in your own slice of paradise.

The building is solidly built and extensively updated, with new balconies, railings, and



elevator. A reserve study has already been completed, and monthly fees adjusted accordingly no surprises here.

This special end unit also features a gated decorative entry area with a striking custom Octopus installation, adding personality and charm. You'll enjoy abundant storage, one garage space, and an additional exterior parking spot. Optionally furnished and turn-key with a full-price offer (excluding select personal items and artwork), this is the effortless, oceanfront lifestyle you've been waiting for.

Built in 1986

Essential Information

MLS® #	1051269
Price	\$1,074,982
Bedrooms	3
Bathrooms	2.00
Full Baths	2
Square Footage	2,077
Acres	0.06
Year Built	1986
Type	Residential
Sub-Type	Condominium
Status	Active

Community Information

Address	2835 Highway A1a N 504
Area	383 - N Indialantic
Subdivision	Sandy Kaye Condo
City	Indialantic
County	Brevard
State	FL
Zip Code	32903

Amenities

Amenities	Beach Access, Cable TV, Clubhouse, Elevator(s), Maintenance
-----------	---

	Grounds, Management - Off Site, Pool, Storage, Water
Utilities	Cable Connected, Electricity Connected, Water Connected
Parking	Assigned, Garage, Underground
# of Garages	1
View	Beach, Ocean, Water
Is Waterfront	Yes
Waterfront	Ocean Access, Ocean Front, Deeded Beach Access

Interior

Interior Features	Breakfast Bar, Breakfast Nook, Ceiling Fan(s), Central Vacuum, Elevator, Guest Suite, Pantry, Primary Bathroom -Tub with Separate Shower, Smart Thermostat, Split Bedrooms
Appliances	Dishwasher, Disposal, Dryer, Electric Range, Electric Water Heater, Microwave, Refrigerator, Washer
Heating	Central
Cooling	Central Air
# of Stories	1
Stories	One

Exterior

Exterior	Block, Concrete
Exterior Features	Balcony, Storm Shutters
Lot Description	Other
Construction	Block, Concrete

School Information

Elementary	Indialantic
Middle	Hoover
High	Melbourne

Additional Information

HOA Fees	1200
HOA Fees Freq.	Monthly

Listing Details

Listing Office	Engel&Voelkers Melb Beachside
----------------	-------------------------------

The information being provided by the Space Coast Association of REALTORS® is exclusively for consumers' personal, non-commercial use, and it may not be used for any purpose other than to identify prospective properties consumers may be interested in purchasing. The data is deemed reliable but is not guaranteed accurate by the MLS.