

\$529,000 - 341 W Arlington Street, Satellite Beach

MLS® #1051514

\$529,000

4 Bedroom, 2.00 Bathroom, 1,646 sqft

Residential on 0.18 Acres

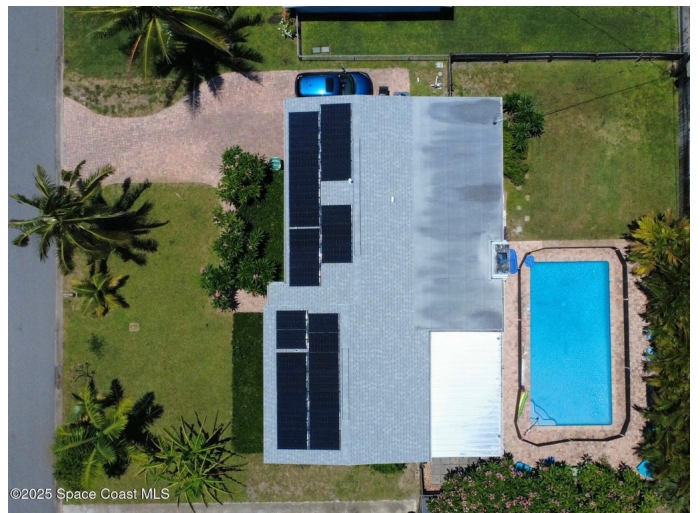
Sea Park Homes 4th Add, Satellite Beach, FL

Check out this updated 4 bed/2 bath beachside pool home only a few blocks away from the ocean! Home features an open concept floor plan, updated kitchen, granite countertops, SS appliances, remodeled bathrooms, wood look tile flooring, new roof 2024, AC 2019, energy efficient windows 2019, hurricane shutters for storm protection and a 100% paid for home solar system for energy and cost savings. Exterior of the home is equipped with a nice size pool, brick paver decking large screened area for entertaining, fully fenced yard. Awesome location on a dead end street and only ½ mile to the nearest beach access. Easy access to schools, shopping, restaurants and Pineda causeway. What a great opportunity to experience beachside living as a full time resident or your vacation getaway!

Built in 1959

Essential Information

MLS® #	1051514
Price	\$529,000
Bedrooms	4
Bathrooms	2.00
Full Baths	2
Square Footage	1,646
Acres	0.18
Year Built	1959



Type	Residential
Sub-Type	Single Family Residence
Style	Ranch
Status	Active

Community Information

Address	341 W Arlington Street
Area	381 - N Satellite Beach
Subdivision	Sea Park Homes 4th Add
City	Satellite Beach
County	Brevard
State	FL
Zip Code	32937

Amenities

Utilities	Cable Available, Electricity Connected, Natural Gas Available, Sewer Connected, Water Connected
Parking	Garage, Garage Door Opener
# of Garages	1
Has Pool	Yes
Pool	Electric Heat, In Ground

Interior

Interior Features	Ceiling Fan(s), Eat-in Kitchen, Open Floorplan, Primary Bathroom - Shower No Tub
Appliances	Dishwasher, Disposal, Dryer, Electric Oven, Electric Range, Electric Water Heater, Microwave, Refrigerator, Washer
Heating	Central, Electric
Cooling	Central Air, Electric
Fireplace	Yes
# of Fireplaces	1
Fireplaces	Wood Burning
# of Stories	1
Stories	One

Exterior

Exterior	Block, Stucco
Exterior Features	Storm Shutters
Lot Description	Dead End Street, Sprinklers In Front, Sprinklers In Rear

Roof	Shingle
Construction	Block, Stucco

School Information

Elementary	Sea Park
Middle	DeLaura
High	Satellite

Listing Details

Listing Office	Blue Marlin Real Estate
----------------	-------------------------

The information being provided by the Space Coast Association of REALTORS® is exclusively for consumers' personal, non-commercial use, and it may not be used for any purpose other than to identify prospective properties consumers may be interested in purchasing. The data is deemed reliable but is not guaranteed accurate by the MLS.