

# \$535,000 - 8361 Sylvan Drive, West Melbourne

MLS® #1053852

**\$535,000**

4 Bedroom, 3.00 Bathroom, 2,032 sqft

Residential on 1.67 Acres

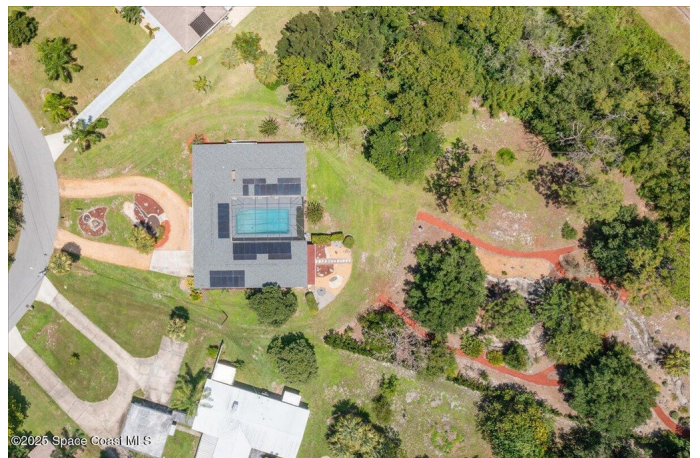
Sylvan Estates Sec A, West Melbourne, FL

PRICED BELOW RECENT APPRAISAL, INSTANT EQUITY. Move-in ready 3+BR/3BA pool home w/bonus room & private guest suite offers versatile space, unique character & a peaceful backyard. Main house opens to bright living & dining rooms accented by a dual-sided fireplace that connects a separate family room. Kitchen includes serving counter that overlooks the family room - ideal for casual living or entertaining. 2 spare bedrooms share full bath w/step-in shower, while owner's suite offers pool views & bath w/linen storage, stand-alone sink & tub/shower combo. Oversized garage provides direct access to spacious laundry room, which connects to bonus room & guest suite. A true highlight, the guest suite includes private bath, kitchenette, back porch seating & pool access - perfect for visitors or multi-gen living. Out back, enjoy a deep, nature-inspired yard w/walking paths, seating areas, a charming bridge & hidden shed. Ceiling fans throughout add comfort. This one-of-a-kind home won't last.

Built in 1963

## Essential Information

MLS® #	1053852
Price	\$535,000
Bedrooms	4
Bathrooms	3.00
Full Baths	3



Square Footage	2,032
Acres	1.67
Year Built	1963
Type	Residential
Sub-Type	Single Family Residence
Style	Ranch
Status	Active

### **Community Information**

Address	8361 Sylvan Drive
Area	331 - West Melbourne
Subdivision	Sylvan Estates Sec A
City	West Melbourne
County	Brevard
State	FL
Zip Code	32904

### **Amenities**

Utilities	Cable Connected, Electricity Connected, Sewer Connected, Water Connected
Parking	Circular Driveway, Garage, Garage Door Opener
# of Garages	2
View	Pool, Trees/Woods
Has Pool	Yes
Pool	In Ground, Pool Sweep, Screen Enclosure

### **Interior**

Interior Features	Breakfast Bar, Ceiling Fan(s), Entrance Foyer, Guest Suite, Primary Bathroom - Tub with Shower
Appliances	Dishwasher, Dryer, Electric Oven, Electric Water Heater, Ice Maker, Microwave, Refrigerator, Washer
Heating	Central, Electric, Other
Cooling	Central Air, Electric, Multi Units, Split System
Fireplace	Yes
Fireplaces	Wood Burning
# of Stories	1
Stories	One

### **Exterior**

Exterior	Block, Frame
Exterior Features	Storm Shutters
Lot Description	Many Trees
Roof	Shingle
Construction	Block, Frame

### **School Information**

Elementary	Roy Allen
Middle	Central
High	Melbourne

### **Listing Details**

Listing Office	RE/MAX Elite
----------------	--------------

The information being provided by the Space Coast Association of REALTORS® is exclusively for consumers' personal, non-commercial use, and it may not be used for any purpose other than to identify prospective properties consumers may be interested in purchasing. The data is deemed reliable but is not guaranteed accurate by the MLS.