

# \$399,000 - 993 Riviera Point Drive, Rockledge

MLS® #1054551

**\$399,000**

3 Bedroom, 2.00 Bathroom, 1,960 sqft  
Residential on 0.22 Acres

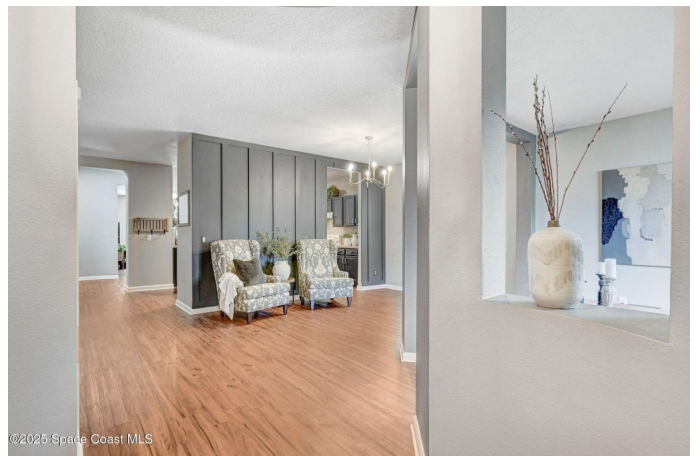
Sabal Point, Rockledge, FL

**\*HUGE PRICE REDUCTION\*** This BEAUTIFULLY MAINTAINED home offers a seamless blend of functionality and natural beauty. With multiple living spaces, the floor plan adapts effortlessly to a variety of lifestyles - whether you need more open living spaces and a SPACIOUS kitchen for entertaining, quiet corners for working at home or additional rooms for guests or hobbies. Tucked beside a serene nature preserve, this home offers both privacy and natural beauty. Soft light pours through the windows and each window offers a peaceful vista view, bringing the outdoors in. While you're enjoying morning coffee on the patio, you'll be treated to water views, wildlife and a tranquil setting, perfect for relaxing and recharging. Located close to shopping, restaurants and I-95. Roof - 2016, AC -2024, Exterior Paint - 2025, Vinyl flooring throughout. Temporary fencing can convey. If you are looking for a "home" and not just a "house", this is the one for you. **\* WELCOME HOME \***

Built in 2004

## Essential Information

MLS® #	1054551
Price	\$399,000
Bedrooms	3
Bathrooms	2.00
Full Baths	2
Square Footage	1,960



Acres	0.22
Year Built	2004
Type	Residential
Sub-Type	Single Family Residence
Style	Ranch
Status	Active

### **Community Information**

Address	993 Riviera Point Drive
Area	214 - Rockledge - West of US1
Subdivision	Sabal Point
City	Rockledge
County	Brevard
State	FL
Zip Code	32955

### **Amenities**

Utilities	Cable Available, Electricity Available, Electricity Connected, Sewer Available, Sewer Connected, Water Available, Water Connected
Parking	Attached
# of Garages	2
View	Pond

### **Interior**

Interior Features	Breakfast Bar, Ceiling Fan(s), Pantry, Primary Bathroom -Tub with Separate Shower, Walk-In Closet(s)
Appliances	Dishwasher, Electric Range, Refrigerator
Heating	Central, Electric
Cooling	Central Air, Electric
# of Stories	1

### **Exterior**

Exterior	Concrete, Stucco
Lot Description	Dead End Street, Sprinklers In Front, Sprinklers In Rear
Roof	Shingle
Construction	Concrete, Stucco

### **School Information**

Elementary	Andersen
------------	----------

Middle	Kennedy
High	Rockledge

### **Additional Information**

HOA Fees	150
HOA Fees Freq.	Annually

### **Listing Details**

Listing Office	BHHS Florida Realty
----------------	---------------------

The information being provided by the Space Coast Association of REALTORS® is exclusively for consumers' personal, non-commercial use, and it may not be used for any purpose other than to identify prospective properties consumers may be interested in purchasing. The data is deemed reliable but is not guaranteed accurate by the MLS.