

# \$434,900 - 942 Peachland Avenue Ne, Palm Bay

MLS® #1054702

**\$434,900**

3 Bedroom, 2.00 Bathroom, 1,924 sqft  
Residential on 0.34 Acres

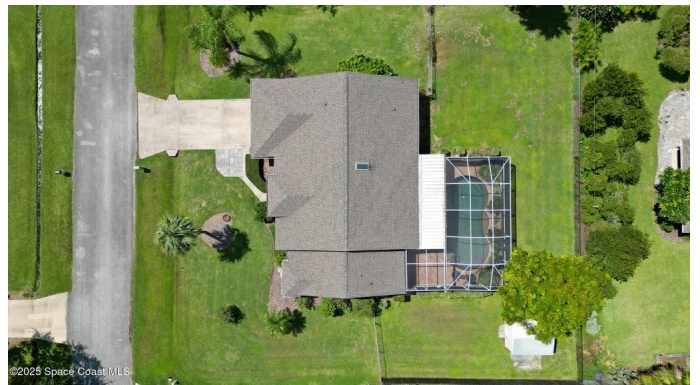
Port Malabar Unit 45, Palm Bay, FL

MOTIVATED SELLERS! Welcome to your own private oasis—this move-in ready 3-bedroom, 2-bath home has everything you've been searching for and more! Situated in a desirable NO HOA neighborhood, this property gives you the freedom to truly enjoy your space. Step inside to a bright split-floor plan featuring updated interior doors, spacious living areas, and an easy flow that's perfect for entertaining. The kitchen and living room open out to your screened-in pool, where you can relax, dine al fresco, or simply soak in the Florida sunshine. Out back, the huge fully fenced yard is a dream—complete with a shed for extra storage and plenty of space to roam. Bring your boat, RV, or toys—there's tons of room for parking with no HOA restrictions holding you back. NEWER roof and AC, giving you peace of mind and efficiency for years to come. The location can't be beat—close to top-rated schools, shopping, dining, and quick highway access.

Built in 1992

## Essential Information

MLS® #	1054702
Price	\$434,900
Bedrooms	3
Bathrooms	2.00
Full Baths	2
Square Footage	1,924



Acres	0.34
Year Built	1992
Type	Residential
Sub-Type	Single Family Residence
Style	Ranch
Status	Active

### **Community Information**

Address	942 Peachland Avenue Ne
Area	341 - Central Palm Bay
Subdivision	Port Malabar Unit 45
City	Palm Bay
County	Brevard
State	FL
Zip Code	32907

### **Amenities**

Utilities	Cable Connected, Electricity Connected, Water Connected
Parking	Garage
# of Garages	2
Has Pool	Yes
Pool	In Ground, Screen Enclosure

### **Interior**

Interior Features	Ceiling Fan(s), Open Floorplan, Walk-In Closet(s)
Appliances	Dishwasher, Dryer, Electric Range, Microwave, Refrigerator, Washer
Heating	Central, Electric
Cooling	Central Air, Electric
# of Stories	1
Stories	One

### **Exterior**

Exterior	Block, Concrete, Stucco
Lot Description	Many Trees
Roof	Shingle
Construction	Block, Concrete, Stucco

### **School Information**

Elementary	Lockmar
------------	---------

Middle

Central

High

Palm Bay

## **Listing Details**

Listing Office

HomeSmart Coastal Realty

The information being provided by the Space Coast Association of REALTORS® is exclusively for consumers' personal, non-commercial use, and it may not be used for any purpose other than to identify prospective properties consumers may be interested in purchasing. The data is deemed reliable but is not guaranteed accurate by the MLS.