

\$695,000 - 471 Lighthouse Landing Street, Satellite Beach

MLS® #1056129

\$695,000

4 Bedroom, 2.00 Bathroom, 2,372 sqft
Residential on 0.21 Acres

Lighthouse Landing, Satellite Beach, FL

Welcome to your dream beachside retreat! Nestled on a quiet cul-de-sac, this beautiful home offers deeded water access and the perfect blend of coastal charm and modern convenience. The resort-style backyard is the ultimate oasis, featuring a heated pool surrounded by lush landscaping – perfect for relaxing or entertaining.

Inside, you'll find a smart layout with two bedrooms downstairs and two bedrooms upstairs, plus a uniquely carved out office space on the second floor that's both functional and full of character. The home offers tons of storage throughout, impact windows upstairs, and shutters for the downstairs windows for added peace of mind.

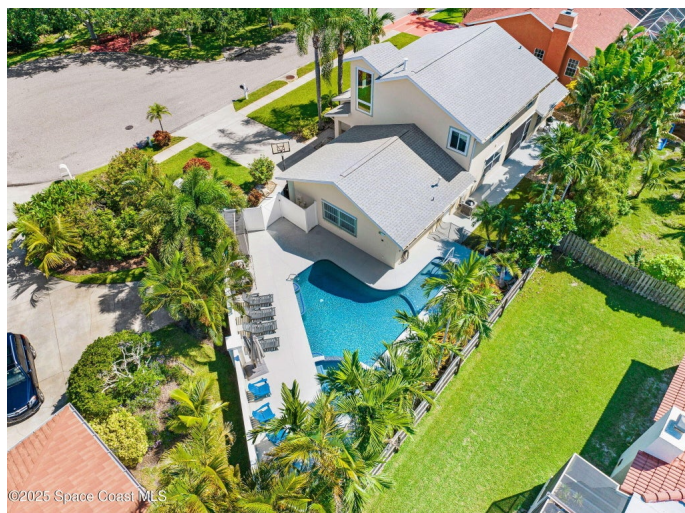
The roof is just a year old, giving you years of worry-free living. Launch your kayak or fish right from the community dock on the canal and enjoy the serene waterfront lifestyle.

This is more than a home – it's a true escape.

Built in 1991

Essential Information

MLS® #	1056129
Price	\$695,000



Bedrooms	4
Bathrooms	2.00
Full Baths	2
Square Footage	2,372
Acres	0.21
Year Built	1991
Type	Residential
Sub-Type	Single Family Residence
Status	Active

Community Information

Address	471 Lighthouse Landing Street
Area	381 - N Satellite Beach
Subdivision	Lighthouse Landing
City	Satellite Beach
County	Brevard
State	FL
Zip Code	32937

Amenities

Amenities	Boat Dock, Management - Full Time, Park
Utilities	Electricity Connected
Parking	Attached, Garage
# of Garages	2
View	Pool
Has Pool	Yes
Pool	Heated, In Ground

Interior

Interior Features	Ceiling Fan(s), Eat-in Kitchen, Open Floorplan, Split Bedrooms, Vaulted Ceiling(s), Walk-In Closet(s)
Appliances	Dishwasher, Electric Range, Microwave, Refrigerator
Heating	Central, Electric
Cooling	Central Air, Electric
# of Stories	2
Stories	Two

Exterior

Exterior	Frame, Stucco, Wood Siding
----------	----------------------------

Exterior Features	Outdoor Shower, Storm Shutters
Lot Description	Cul-De-Sac, Dead End Street
Roof	Shingle
Construction	Frame, Stucco, Wood Siding

School Information

Elementary	Sea Park
Middle	DeLaura
High	Satellite

Additional Information

HOA Fees	480
HOA Fees Freq.	Annually

Listing Details

Listing Office	RE/MAX Solutions
----------------	------------------

The information being provided by the Space Coast Association of REALTORS® is exclusively for consumers' personal, non-commercial use, and it may not be used for any purpose other than to identify prospective properties consumers may be interested in purchasing. The data is deemed reliable but is not guaranteed accurate by the MLS.