

# \$649,999 - 3460 Salt Marsh Circle, West Melbourne

MLS® #1056159

## \$649,999

4 Bedroom, 4.00 Bathroom, 2,779 sqft  
Residential on 0.23 Acres

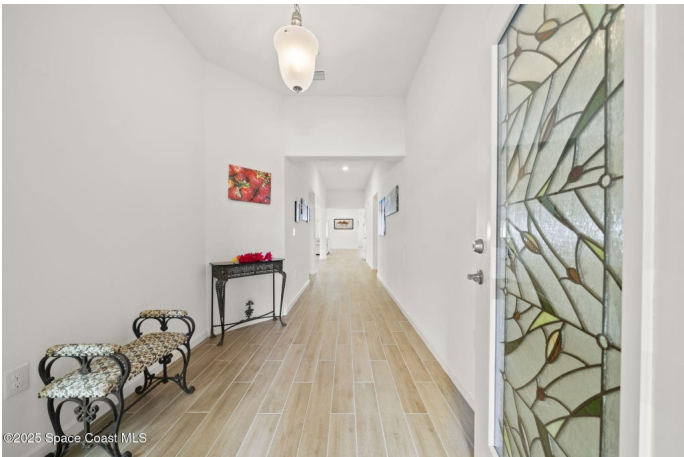
Sawgrass Lakes The Sanctuary, West  
Melbourne, FL

A standout in the neighborhood- step into this move in ready home where style meets function. An open concept floor plan is enhanced by impact windows and doors, elegant quartz countertops, 2 dishwashers, and 3 hvac units for year round comfort. Designed for todays lifestyles, the generational living suite offers a private bedroom, bathroom, living room and kitchenette with its own separate entrance- Ideal for in laws, guests or multi family living. Located in the sought after gated community, you'll enjoy resort style amenities such as a sparkling pool with waterslide, clubhouse, tennis courts and a warm family friendly atmosphere. This home truly has it all- Space, style and unmatched flexibility, Don't miss your chance to make it yours today!

Built in 2020

### Essential Information

MLS® #	1056159
Price	\$649,999
Bedrooms	4
Bathrooms	4.00
Full Baths	3
Half Baths	1
Square Footage	2,779
Acres	0.23



Year Built	2020
Type	Residential
Sub-Type	Single Family Residence
Style	Multi Generational
Status	Active

### **Community Information**

Address	3460 Salt Marsh Circle
Area	331 - West Melbourne
Subdivision	Sawgrass Lakes The Sanctuary
City	West Melbourne
County	Brevard
State	FL
Zip Code	32904

### **Amenities**

Amenities	Clubhouse, Maintenance Grounds, Playground, Pool, Tennis Court(s), Management - On Site
Utilities	Cable Available, Electricity Connected, Sewer Connected, Water Connected
Parking	Garage, Garage Door Opener
# of Garages	3

### **Interior**

Interior Features	Breakfast Nook, Eat-in Kitchen, In-Law Floorplan, Kitchen Island, Open Floorplan, Pantry, Primary Bathroom -Tub with Separate Shower, Split Bedrooms, Walk-In Closet(s)
Appliances	Dishwasher, Electric Range, Microwave
Heating	Central
Cooling	Central Air, Multi Units
# of Stories	1
Stories	One

### **Exterior**

Exterior	Block, Concrete, Stucco
Exterior Features	Impact Windows
Lot Description	Sprinklers In Front, Sprinklers In Rear
Roof	Shingle
Construction	Block, Concrete, Stucco

**School Information**

Elementary	Meadowlane
Middle	Central
High	Melbourne

**Additional Information**

HOA Fees	209
HOA Fees Freq.	Quarterly

**Listing Details**

Listing Office	Real Broker, LLC
----------------	------------------

The information being provided by the Space Coast Association of REALTORS® is exclusively for consumers' personal, non-commercial use, and it may not be used for any purpose other than to identify prospective properties consumers may be interested in purchasing. The data is deemed reliable but is not guaranteed accurate by the MLS.