

\$469,932 - 503 Veridian Circle Nw, Palm Bay

MLS® #1056781

\$469,932

5 Bedroom, 3.00 Bathroom, 2,922 sqft
Residential on 0.14 Acres

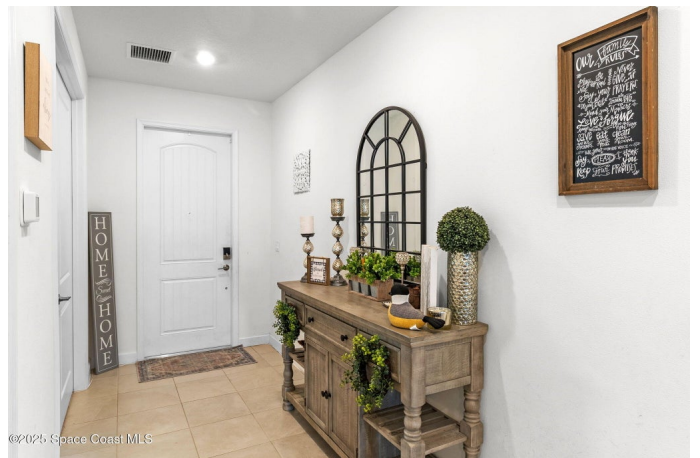
Edgewood at Everlands, Palm Bay, FL

This waterfront home offers 5 bedrooms plus a den in an open, airy layout designed for lounging and entertaining. The first-floor primary suite overlooks the lake and flows to a spa-like ensuite bath and a huge walk-in closet, while a second upstairs family room provides extra living space. Enjoy breathtaking sunsets from your backyard and nearby lake views that set a magical mood. The kitchen features quartz countertops, marble window sills, and 42" cabinets, with impact windows delivering quiet interiors, energy efficiency, and easy storm prep. Four additional bedrooms provide ample space for guests, family, or work-from-home setups. Outside and in the community, residents can stroll to the pool, take part in an active schedule of neighborhood events and movie nights, and savor the tranquil waterfront setting. Location is ultra-convenient—easy access to Melbourne via St. John's Heritage Pkwy, with a variety of shopping and dining options just 10-15 minutes away. Publix is opening a mile from home for daily errands, making this a practical, year-round retreat that combines luxury with easy living.

Built in 2023

Essential Information

MLS® #	1056781
Price	\$469,932



Bedrooms	5
Bathrooms	3.00
Full Baths	3
Square Footage	2,922
Acres	0.14
Year Built	2023
Type	Residential
Sub-Type	Single Family Residence
Status	Active

Community Information

Address	503 Veridian Circle Nw
Area	344 - NW Palm Bay
Subdivision	Edgewood at Everlands
City	Palm Bay
County	Brevard
State	FL
Zip Code	32907

Amenities

Utilities	Cable Available, Electricity Available, Electricity Connected, Sewer Connected, Water Available, Water Connected
Parking	Garage, Garage Door Opener
# of Garages	2
Is Waterfront	Yes
Waterfront	Pond

Interior

Heating	Central
Cooling	Central Air
# of Stories	2

Exterior

Exterior	Block, Concrete
Lot Description	Other
Construction	Block, Concrete

School Information

Elementary	Discovery
------------	-----------

Middle	Central
High	Heritage

Additional Information

HOA Fees	225
HOA Fees Freq.	Monthly

Listing Details

Listing Office	EXP Realty LLC
----------------	----------------

The information being provided by the Space Coast Association of REALTORS® is exclusively for consumers' personal, non-commercial use, and it may not be used for any purpose other than to identify prospective properties consumers may be interested in purchasing. The data is deemed reliable but is not guaranteed accurate by the MLS.