

\$430,000 - 4445 Pagosa Springs Circle, Melbourne

MLS® #1057303

\$430,000

4 Bedroom, 2.00 Bathroom, 1,830 sqft

Residential on 0.25 Acres

Ridgecrest, Melbourne, FL

Welcome to this charming 4-bedroom, 2-bath home situated on a large corner lot in the beautiful community of Ridgecrest! Located just off Dairy Road, this home offers quick access to I-95, shopping, dining, and entertainment—including bowling, a movie theater, and a golf course.

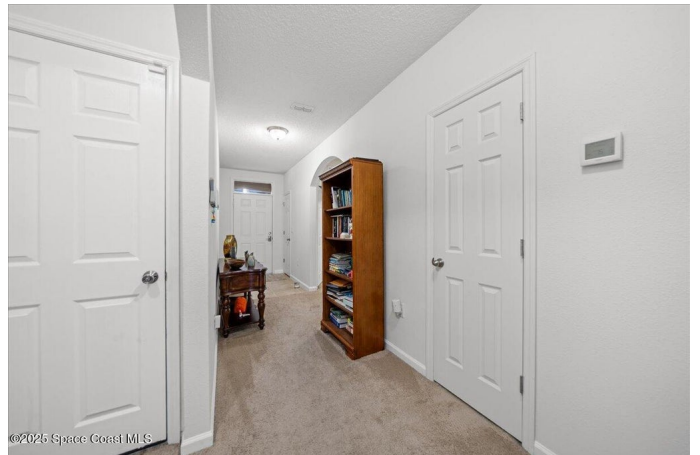
Inside, the open floor plan is designed for both comfort and functionality. The master suite features a large walk-in closet, a double-sink vanity, and a stand-up shower. The split-bedroom layout provides privacy, while the additional bedrooms offer plenty of space for family, guests, or a home office.

Enjoy Florida's indoor-outdoor lifestyle with an enclosed front entrance and a screened back porch with water feature views, perfect for relaxing or entertaining. With its prime location and inviting features, this home combines convenience, charm, and everyday comfort.

Built in 2018

Essential Information

MLS® #	1057303
Price	\$430,000
Bedrooms	4
Bathrooms	2.00
Full Baths	2
Square Footage	1,830



Acres	0.25
Year Built	2018
Type	Residential
Sub-Type	Single Family Residence
Status	Active

Community Information

Address	4445 Pagosa Springs Circle
Area	330 - Melbourne - Central
Subdivision	Ridgecrest
City	Melbourne
County	Brevard
State	FL
Zip Code	32901

Amenities

Utilities	Cable Connected, Electricity Connected, Sewer Connected, Water Connected
Parking	Garage
# of Garages	2
View	Pond

Interior

Interior Features	Ceiling Fan(s), Entrance Foyer, Kitchen Island, Open Floorplan, Pantry, Walk-In Closet(s)
Appliances	Dishwasher, Disposal, Electric Cooktop, Electric Oven, Ice Maker, Microwave, Refrigerator
Heating	Electric
Cooling	Electric
# of Stories	1
Stories	One

Exterior

Exterior	Block
Exterior Features	Storm Shutters
Lot Description	Corner Lot, Sprinklers In Front
Roof	Shingle
Construction	Block

School Information

Elementary	University Park
Middle	Stone
High	Palm Bay

Additional Information

HOA Fees	275
HOA Fees Freq.	Quarterly

Listing Details

Listing Office	LoKation
----------------	----------

The information being provided by the Space Coast Association of REALTORS® is exclusively for consumers' personal, non-commercial use, and it may not be used for any purpose other than to identify prospective properties consumers may be interested in purchasing. The data is deemed reliable but is not guaranteed accurate by the MLS.