

\$419,000 - 7932 Citrus Creek Drive, Melbourne

MLS® #1057915

\$419,000

3 Bedroom, 2.00 Bathroom, 1,701 sqft
Residential on 0.16 Acres

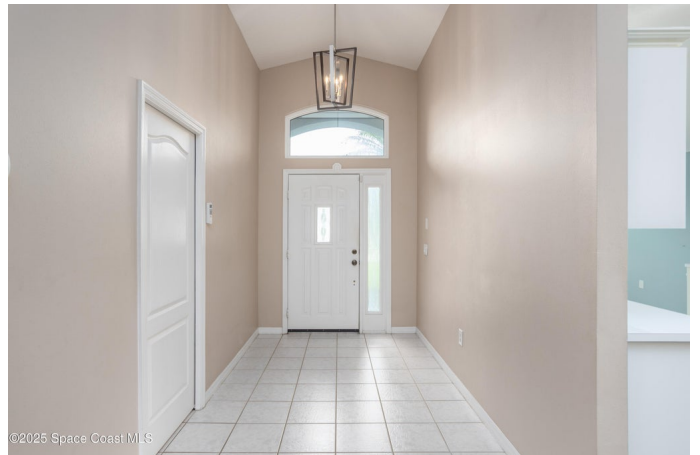
Misty Creek Unit 2, Melbourne, FL

Immaculate home in the desirable Suntree community of Misty Creek. Beautifully maintained inside and out, this residence offers an open floor plan with vaulted ceilings, a formal dining room, and a large eat-in kitchen complete with a breakfast nook and bar. The master suite features a large walk-in closet and a bath with double vanities, a garden tub, and a separate shower. The open layout flows seamlessly into the living and family room, which leads to a spacious enclosed lanai ideal for year-round enjoyment. Upgrades include PGT vinyl impact windows, a Genie Aladdin Connect Wi-Fi garage door opener, a SimpliSafe monitoring system, removable vinyl windows for the lanai, and Advanced Hurricane Technology Super Span roll-down screens on the front door and lanai. The low HOA fee includes access to a community pool, lawn care, irrigation, and exterior painting. Ideally located close to top-rated schools, shopping, dining, beautiful beaches, and Suntree Country Club.

Built in 1999

Essential Information

MLS® #	1057915
Price	\$419,000
Bedrooms	3
Bathrooms	2.00
Full Baths	2



Square Footage	1,701
Acres	0.16
Year Built	1999
Type	Residential
Sub-Type	Single Family Residence
Status	Active

Community Information

Address	7932 Citrus Creek Drive
Area	216 - Viera/Suntree N of Wickham
Subdivision	Misty Creek Unit 2
City	Melbourne
County	Brevard
State	FL
Zip Code	32940

Amenities

Amenities	Maintenance Grounds, Pool, Management - On Site
Utilities	Natural Gas Available, Natural Gas Connected, Sewer Connected, Water Connected
Parking	Attached, Garage Door Opener
# of Garages	2

Interior

Interior Features	Breakfast Bar, Breakfast Nook, Ceiling Fan(s), Eat-in Kitchen, Open Floorplan, Primary Bathroom -Tub with Separate Shower, Split Bedrooms, Vaulted Ceiling(s), Walk-In Closet(s)
Appliances	Dishwasher, Disposal, Dryer, Electric Oven, Electric Range, Gas Water Heater, Microwave, Washer
Heating	Central, Electric
Cooling	Central Air, Electric
# of Stories	1

Exterior

Exterior	Block, Stucco
Lot Description	Corner Lot, Dead End Street
Construction	Block, Stucco

School Information

Elementary	Quest
------------	-------

Middle	DeLaura
High	Viera

Additional Information

HOA Fees	898
HOA Fees Freq.	Semi-Annually

Listing Details

Listing Office	One Sotheby's International
----------------	-----------------------------

The information being provided by the Space Coast Association of REALTORS® is exclusively for consumers' personal, non-commercial use, and it may not be used for any purpose other than to identify prospective properties consumers may be interested in purchasing. The data is deemed reliable but is not guaranteed accurate by the MLS.