

# \$371,880 - 2158 Croft Inlet Drive Nw, Palm Bay

MLS® #1058031

**\$371,880**

5 Bedroom, 3.00 Bathroom, 2,218 sqft  
Residential on 0.12 Acres

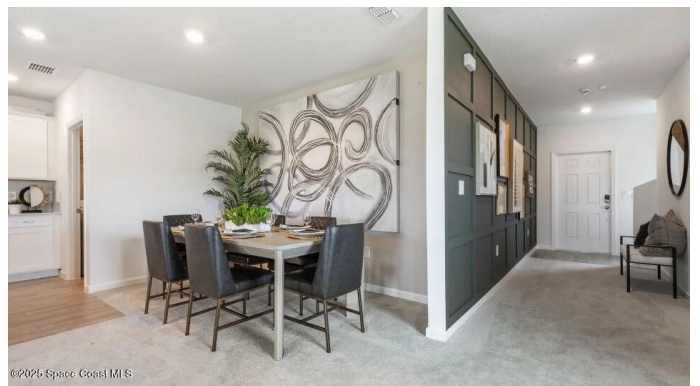
Riverwood at Everlands, Palm Bay, FL

Welcome to Riverwood at Everlands! This two-story Boston Model features a smart layout that offers endless possibilities. The spacious two-story home features an open-concept layout shared between the kitchen, dining and living room to promote effortless transitions between spaces. A back covered patio is ready for outdoor leisure. The comfortable owner's suite is tucked on the first floor for added privacy, while the top floor hosts four secondary bedrooms and a large loft area. This home features IMPACT WINDOWS, paver driveways/ walkways, quartz countertops in the kitchen and baths, 5 1/4 Crown Molding in main living area, 18 x 18 ceramic tile throughout 1st floor main living areas, grey shaker style cabinets with crown molding, 2" faux blinds on windows, a covered lanai, and so much more. Photos are for illustrative purposes only. Home to be constructed ~ Estimated Completion August 2025.

Built in 2025

## Essential Information

MLS® #	1058031
Price	\$371,880
Bedrooms	5
Bathrooms	3.00
Full Baths	2
Half Baths	1



Square Footage	2,218
Acres	0.12
Year Built	2025
Type	Residential
Sub-Type	Single Family Residence
Status	Active

### Community Information

Address	2158 Croft Inlet Drive Nw
Area	344 - NW Palm Bay
Subdivision	Riverwood at Everlands
City	Palm Bay
County	Brevard
State	FL
Zip Code	32907

### Amenities

Amenities	Gated, Maintenance Grounds, Management - Off Site, Pool, Other
Utilities	Cable Connected, Electricity Connected, Sewer Connected, Water Connected
Parking	Attached, Garage
# of Garages	2
View	Other

### Interior

Interior Features	Breakfast Bar, Kitchen Island, Open Floorplan, Pantry, Primary Bathroom - Shower No Tub, Primary Downstairs, Walk-In Closet(s)
Appliances	Dishwasher, Disposal, Electric Range, Electric Water Heater, Microwave, Plumbed For Ice Maker, Refrigerator
Heating	Central, Electric
Cooling	Central Air, Electric
# of Stories	2
Stories	Two

### Exterior

Exterior	Block, Stucco
Exterior Features	Impact Windows
Lot Description	Sprinklers In Front, Sprinklers In Rear, Other
Roof	Shingle

Construction           Block, Stucco

**School Information**

Elementary           Meadowlane  
Middle               Central  
High                  Heritage

**Additional Information**

HOA Fees             265  
HOA Fees Freq.    Monthly

**Listing Details**

Listing Office       Lennar Realty, Inc.

The information being provided by the Space Coast Association of REALTORS® is exclusively for consumers' personal, non-commercial use, and it may not be used for any purpose other than to identify prospective properties consumers may be interested in purchasing. The data is deemed reliable but is not guaranteed accurate by the MLS.