

\$800,000 - 1114 Woodsmere Parkway, Rockledge

MLS® #1058354

\$800,000

5 Bedroom, 5.00 Bathroom, 3,864 sqft

Residential on 0.56 Acres

Woodsmere Sec 3 Replat of Lots 10 11 and 12, Rockledge, FL

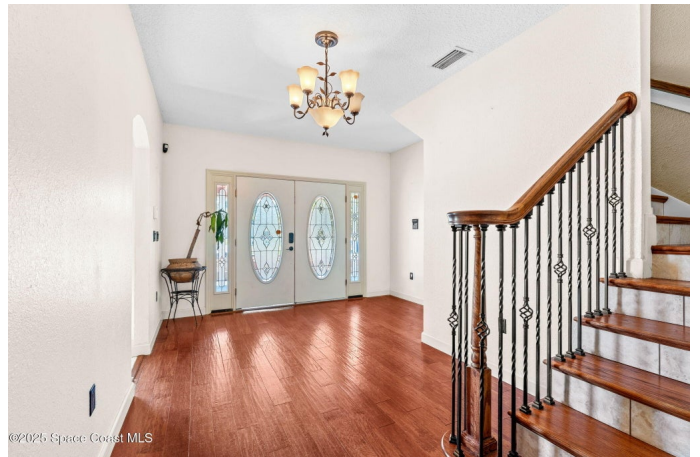
2014 Custom MULTI GENERATIONAL Home on Half an Acre with In-Law Apartment & Pool!

No HOA telling you how to live your life! Built in 2014, this rare multi-generational home sits on over half an acre with nearly 4,000 sq ft of living space and room for a boat or RV. The main home offers 4 bedrooms and 4.5 baths, including a first-floor suite, plus open kitchen, dining, and living areas. A private interior entrance connects to the apartment, which also has its own exterior entry. Perfect for independent living, the apartment features a brand-new HVAC, full kitchen with real wood cabinets, living room with gas fireplace, bedroom, and bath, plus access to the 3-car garage (currently 2-car + laundry + workshop). Upstairs, another suite impresses with a gas fireplace, balcony, soaking tub, double vanities, and double-head shower. High-impact windows, three plywood-floored attics for storage, and outdoor living with inground pool, summer kitchen, and yard—this home checks every box!

Built in 2014

Essential Information

MLS® #	1058354
Price	\$800,000
Bedrooms	5



Bathrooms	5.00
Full Baths	4
Half Baths	1
Square Footage	3,864
Acres	0.56
Year Built	2014
Type	Residential
Sub-Type	Single Family Residence
Status	Active

Community Information

Address	1114 Woodsmere Parkway
Area	214 - Rockledge - West of US1
Subdivision	Woodsmere Sec 3 Replat of Lots 10 11 and 12
City	Rockledge
County	Brevard
State	FL
Zip Code	32955

Amenities

Utilities	Cable Available, Electricity Available, Electricity Connected, Sewer Available, Sewer Connected, Water Available, Water Connected
Parking	Additional Parking, Circular Driveway, Garage
# of Garages	3
Has Pool	Yes
Pool	In Ground, Screen Enclosure

Interior

Interior Features	Breakfast Bar, Breakfast Nook, Ceiling Fan(s), Eat-in Kitchen, Entrance Foyer, Guest Suite, In-Law Floorplan, Jack and Jill Bath, Open Floorplan, Primary Bathroom -Tub with Separate Shower, Primary Downstairs, Smart Thermostat, Split Bedrooms, Vaulted Ceiling(s), Walk-In Closet(s)
Appliances	Dishwasher, Dryer, Gas Cooktop, Gas Range, Refrigerator, Tankless Water Heater, Washer
Heating	Central, Electric
Cooling	Central Air, Electric
Fireplace	Yes
# of Fireplaces	3

Fireplaces	Gas
# of Stories	2
Stories	Two

Exterior

Exterior	Stucco
Exterior Features	Outdoor Kitchen, Impact Windows
Lot Description	Other
Roof	Shingle
Construction	Stucco

School Information

Elementary	Andersen
Middle	Kennedy
High	Rockledge

Listing Details

Listing Office	Blue Marlin Real Estate
----------------	-------------------------

The information being provided by the Space Coast Association of REALTORS® is exclusively for consumers' personal, non-commercial use, and it may not be used for any purpose other than to identify prospective properties consumers may be interested in purchasing. The data is deemed reliable but is not guaranteed accurate by the MLS.