

\$405,000 - 3120 San Filippo Drive Se, Palm Bay

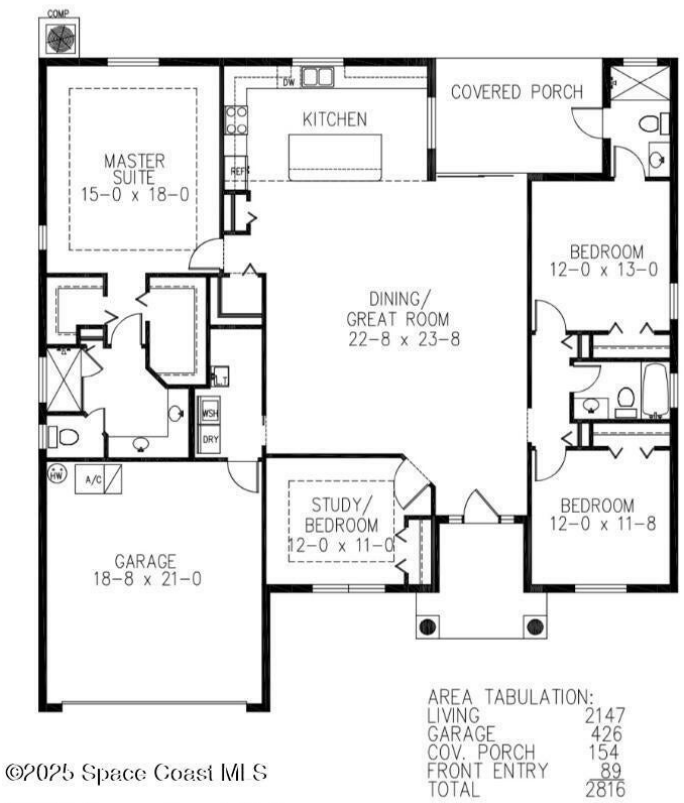
MLS® #1058556

\$405,000

4 Bedroom, 3.00 Bathroom, 2,147 sqft
Residential on 0.23 Acres

Port Malabar Unit 25, Palm Bay, FL

Experience the pinnacle of quality craftsmanship and innovation as you step into a world of luxury and functionality with this four-bedroom, three-full-bath residence, thoughtfully designed with a multigenerational concept in mind. With the Zak3 floor plan enjoy the convenience of an owner suite on one side and a spacious en suite on the other , offering unparalleled privacy and comfort. This home boast energy-efficient windows throughout, flooding each room with natural light and warmth. Designed for both style & durability, the home features porcelain plank tile throughout the home. The bathrooms continue the luxurious feel will seamless showers & floor to ceiling tile. Chef's dream kitchen with 42-inch cabinetry, high end quartz countertops and an impressive 8-foot island. Standard kitchen islands range from 4-6 ft. Upon entrance you will see soaring 11.5 ft cathedral ceilings. All 4 bedrooms are oversized. Tray ceilings, premium baseboards & elegant crown molding & much more.



Built in 2025

Essential Information

MLS® #	1058556
Price	\$405,000
Bedrooms	4
Bathrooms	3.00
Full Baths	3

Square Footage	2,147
Acres	0.23
Year Built	2025
Type	Residential
Sub-Type	Single Family Residence
Style	Contemporary
Status	Active

Community Information

Address	3120 San Filippo Drive Se
Area	343 - SE Palm Bay
Subdivision	Port Malabar Unit 25
City	Palm Bay
County	Brevard
State	FL
Zip Code	32909

Amenities

Utilities	Electricity Connected, Water Connected
Parking	Garage, Garage Door Opener
# of Garages	2

Interior

Interior Features	Breakfast Bar, Ceiling Fan(s), Eat-in Kitchen, Entrance Foyer, His and Hers Closets, In-Law Floorplan, Kitchen Island, Open Floorplan, Pantry, Split Bedrooms, Walk-In Closet(s)
Appliances	Dishwasher, Disposal, Electric Cooktop, Electric Oven, Electric Range, Ice Maker
Heating	Central, Electric
Cooling	Central Air, Electric
# of Stories	1
Stories	One

Exterior

Exterior	Concrete, Composition Siding
Exterior Features	Storm Shutters
Lot Description	Other
Roof	Shingle
Construction	Concrete, Composition Siding

School Information

Elementary	Westside
Middle	Southwest
High	Bayside

Listing Details

Listing Office	EXP Realty, LLC
----------------	-----------------



The information being provided by the Space Coast Association of REALTORS® is exclusively for consumers' personal, non-commercial use, and it may not be used for any purpose other than to identify prospective properties consumers may be interested in purchasing. The data is deemed reliable but is not guaranteed accurate by the MLS.