

\$444,900 - 372 Croquet Avenue Ne, Palm Bay

MLS® #1058775

\$444,900

4 Bedroom, 3.00 Bathroom, 2,225 sqft

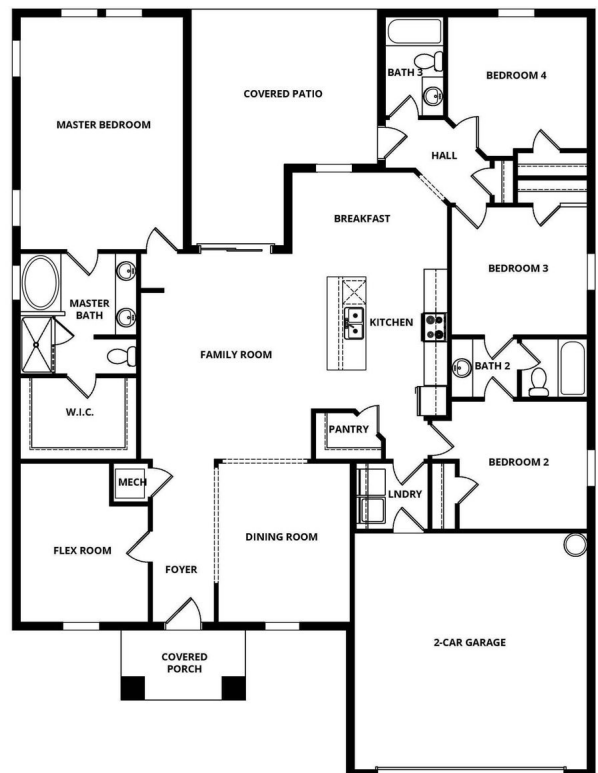
Residential on 0.28 Acres

Port Malabar Unit 7, Palm Bay, FL

Ask us about our incentives, builder paid closing costs, & no down payment options! The Greenfield is a beautiful four-bedroom home with an additional flex room at the front of the house, perfect for a home office, study, or playroom. This open layout includes a spacious family room and chef-ready kitchen, where a walk-in pantry provides ample storage, making meal prep and organization a breeze. An incredible covered patio in the backyard is perfect for outdoor dining, relaxing and entertaining year-round. With both functional and flexible spaces, the Greenfield is designed to adapt to your family's needs. Centrally located with shopping, I-95, parks and beaches, this home is positioned on a prime corner lot on a quiet street with a small canal running behind the home. In addition, the home is landscaped with all native plants and includes a sprinkler around the entire home. **appliance models are subject to availability**



©2025 Space Coast MLS



©2025 Space Coast MLS

Built in 2026

Essential Information

MLS® #	1058775
Price	\$444,900
Bedrooms	4
Bathrooms	3.00
Full Baths	3
Square Footage	2,225

Acres	0.28
Year Built	2026
Type	Residential
Sub-Type	Single Family Residence
Style	Traditional
Status	Active

Community Information

Address	372 Croquet Avenue Ne
Area	340 - NE Palm Bay
Subdivision	Port Malabar Unit 7
City	Palm Bay
County	Brevard
State	FL
Zip Code	32907

Amenities

Utilities	Cable Available, Electricity Available, Water Available
Parking	Attached, Covered, Garage, Garage Door Opener
# of Garages	2

Interior

Interior Features	Breakfast Nook, Ceiling Fan(s), Kitchen Island, Open Floorplan, Pantry, Primary Bathroom -Tub with Separate Shower, Walk-In Closet(s)
Appliances	Dishwasher, Disposal, Electric Cooktop, Electric Oven, Electric Water Heater, Microwave, Refrigerator
Heating	Central, Electric
Cooling	Central Air, Electric
# of Stories	1
Stories	One

Exterior

Exterior	Block, Concrete, Other
Exterior Features	Storm Shutters
Lot Description	Corner Lot, Drainage Canal, Sprinklers In Front, Sprinklers In Rear
Roof	Shingle
Construction	Block, Concrete, Other

School Information

Elementary	McAuliffe
Middle	Southwest
High	Palm Bay

Listing Details

Listing Office	LGI Realty-Florida LLC
----------------	------------------------

The information being provided by the Space Coast Association of REALTORS® is exclusively for consumers' personal, non-commercial use, and it may not be used for any purpose other than to identify prospective properties consumers may be interested in purchasing. The data is deemed reliable but is not guaranteed accurate by the MLS.