

# \$324,900 - 2734 Wright Avenue Se, Palm Bay

MLS® #1058823

**\$324,900**

4 Bedroom, 2.00 Bathroom, 1,678 sqft

Residential on 0.23 Acres

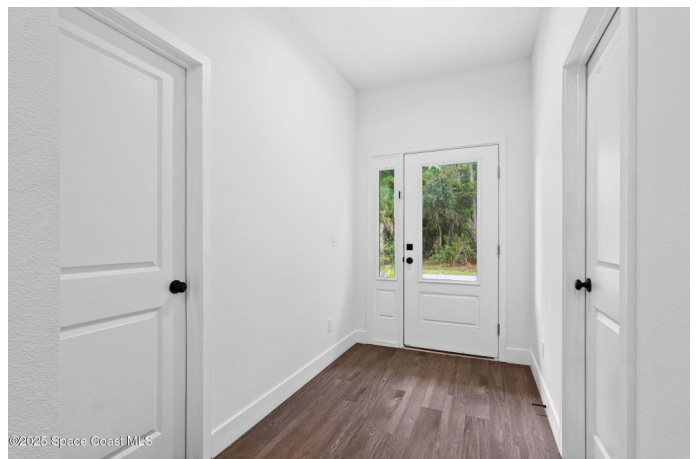
Port Malabar Unit 24, Palm Bay, FL

BUILT IN 2023! 4 bedroom, 2 bath home located in Florida's Space Coast and 30 minutes from Melbourne Beach. This luxurious model offers an open concept floor plan with a spacious living area, modern kitchen, and dining space. Upgrades include quartz countertops, a large island, stainless steel appliances, and LVP flooring throughout for easy maintenance. The split-bedroom layout adds privacy to the primary suite, which boasts a walk-in closet, a dual sink vanity, and a tiled shower. The remaining bedrooms share a guest bathroom with a dual sink vanity and bathtub. This property is located on a spacious lot with a backyard and patio perfect for a dining set, lounge area, garden, or outdoor grilling station. Convenient distance from Malabar Road, public transportation, K-12 schools, and Highway I-95. Less than 30 minutes away from popular attractions such as the Brevard Zoo, Indian River, and Melbourne Beach. Don't miss out on this opportunity to make this home yours!

Built in 2023

## Essential Information

MLS® #	1058823
Price	\$324,900
Bedrooms	4
Bathrooms	2.00
Full Baths	2



Square Footage	1,678
Acres	0.23
Year Built	2023
Type	Residential
Sub-Type	Single Family Residence
Status	Active

### Community Information

Address	2734 Wright Avenue Se
Area	345 - SW Palm Bay
Subdivision	Port Malabar Unit 24
City	Palm Bay
County	Brevard
State	FL
Zip Code	32909

### Amenities

Utilities	Cable Available, Electricity Available, Water Available
Parking	Attached, Garage, Garage Door Opener
# of Garages	2

### Interior

Interior Features	Breakfast Bar, Eat-in Kitchen, Entrance Foyer, Kitchen Island, Open Floorplan, Pantry, Primary Bathroom - Shower No Tub, Split Bedrooms, Walk-In Closet(s)
Appliances	Dishwasher, Electric Range, Microwave, Refrigerator
Heating	Central
Cooling	Central Air
# of Stories	1
Stories	One

### Exterior

Exterior	Block, Concrete, Stucco
Exterior Features	Storm Shutters
Lot Description	Cleared
Roof	Shingle
Construction	Block, Concrete, Stucco

### School Information

Elementary	Westside
Middle	Southwest
High	Bayside

**Listing Details**

Listing Office	The Realty Medics
----------------	-------------------

The information being provided by the Space Coast Association of REALTORS® is exclusively for consumers' personal, non-commercial use, and it may not be used for any purpose other than to identify prospective properties consumers may be interested in purchasing. The data is deemed reliable but is not guaranteed accurate by the MLS.