

\$444,900 - 238 Fitchburg Street Sw, Palm Bay

MLS® #1059366

\$444,900

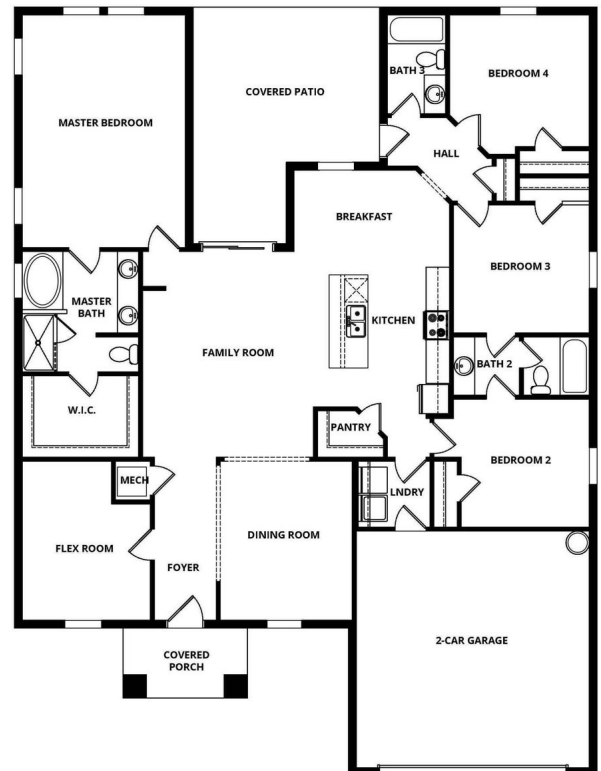
4 Bedroom, 3.00 Bathroom, 2,225 sqft
Residential on 0.24 Acres

Port Malabar Unit 31, Palm Bay, FL

Ask us about our incentives, builder paid closing costs, & no down payment options! The beautiful Greenfield plan offers exceptional space with four spacious bedrooms and a versatile den, perfect for a home office or media room. The spacious open-concept design creates a seamless flow between the living, dining, and kitchen spaces, making it ideal for both relaxing and entertaining. A separate dining room provides a formal setting for meals, while the cozy nook is perfect for casual dining. With its generous layout and thoughtful features, this home is perfect for your family to enjoy both comfort and functionality. This home is close to the Bayside discovery Center, parks, and minutes from shopping. Enjoy a beautifully landscaped yard with native plants and a sprinkler in front and back. In addition you'll have easy access to main roads while living on a quiet neighborhood street. **appliance models are subject to availability**



©2025 Space Coast MLS



©2025 Space Coast MLS

Built in 2026

Essential Information

MLS® #	1059366
Price	\$444,900
Bedrooms	4
Bathrooms	3.00
Full Baths	3
Square Footage	2,225

Acres	0.24
Year Built	2026
Type	Residential
Sub-Type	Single Family Residence
Style	Traditional
Status	Active

Community Information

Address	238 Fitchburg Street Sw
Area	345 - SW Palm Bay
Subdivision	Port Malabar Unit 31
City	Palm Bay
County	Brevard
State	FL
Zip Code	32908

Amenities

Utilities	Cable Available, Electricity Available, Water Available
Parking	Attached, Covered, Garage, Garage Door Opener
# of Garages	2

Interior

Interior Features	Ceiling Fan(s), Kitchen Island, Pantry, Primary Bathroom -Tub with Separate Shower, Split Bedrooms, Walk-In Closet(s)
Appliances	Dishwasher, Disposal, Electric Cooktop, Electric Oven, Microwave, Refrigerator
Heating	Central, Electric
Cooling	Central Air, Electric
# of Stories	1
Stories	One

Exterior

Exterior	Block, Concrete
Exterior Features	Storm Shutters
Lot Description	Sprinklers In Front, Sprinklers In Rear
Roof	Shingle
Construction	Block, Concrete

School Information

Elementary	Westside
Middle	Southwest
High	Bayside

Listing Details

Listing Office	LGI Realty-Florida LLC
----------------	------------------------

The information being provided by the Space Coast Association of REALTORS® is exclusively for consumers' personal, non-commercial use, and it may not be used for any purpose other than to identify prospective properties consumers may be interested in purchasing. The data is deemed reliable but is not guaranteed accurate by the MLS.