

\$435,000 - 2013 Farmhouse Road Se, Palm Bay

MLS® #1059515

\$435,000

4 Bedroom, 2.00 Bathroom, 1,830 sqft

Residential on 0.16 Acres

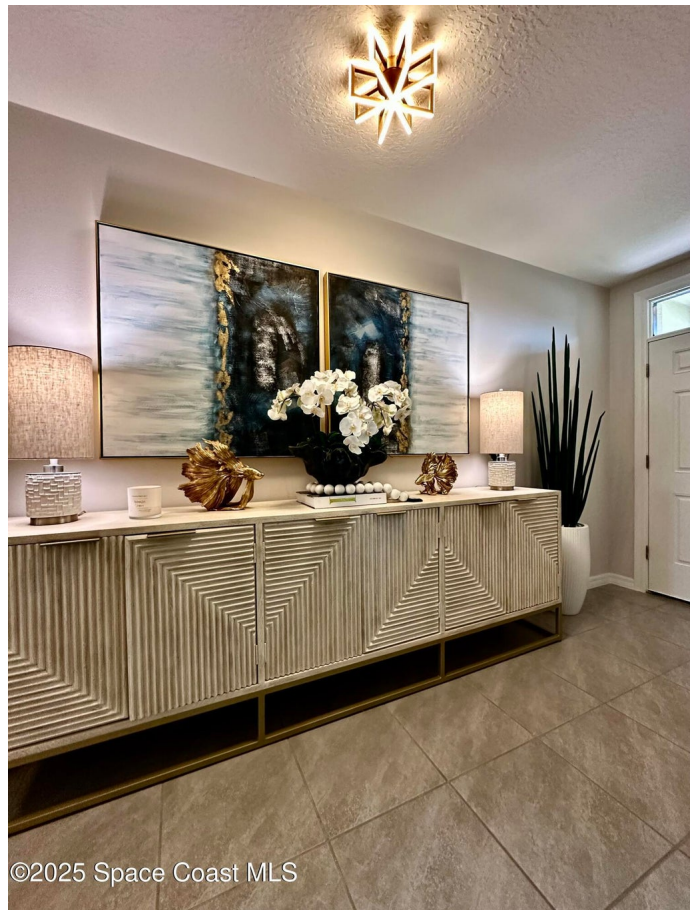
Cypress Bay Preserve Phase 2, Palm Bay, FL

Move in ready home now available in Cypress Bay Preserve next to the new Publix shopping center! No stone left unturned in this 2023 built home. Your new home offers must see upgrades with nearly every item in the home negotiable to keep the stunning decor! Kitchen has been upgraded with Cambria Quartz counters (lifetime transferrable warranty), induction cooktop, high efficiency dishwasher, beautiful drop lighting above the island with matching island faucet. The pantry has been upgraded with electrical so all "counter" appliances have their own functional spot without losing counter space. Open floor plan with sliding doors to your serene preserve paradise. Prior to reaching your sunken in private pool, you have a screen area for morning tea and open patio area. Backyard also offers a pergola with a roof that can be opened to the sunlight or closed for shade. Gutters with leaf control have been installed on the exterior of the home. Too much to mention in this one of a kind home!

Built in 2023

Essential Information

MLS® #	1059515
Price	\$435,000
Bedrooms	4
Bathrooms	2.00
Full Baths	2



Square Footage	1,830
Acres	0.16
Year Built	2023
Type	Residential
Sub-Type	Single Family Residence
Status	Active

Community Information

Address	2013 Farmhouse Road Se
Area	343 - SE Palm Bay
Subdivision	Cypress Bay Preserve Phase 2
City	Palm Bay
County	Brevard
State	FL
Zip Code	32909

Amenities

Utilities	Cable Available, Electricity Available, Sewer Available, Water Available
Parking	Garage
# of Garages	2
Has Pool	Yes
Pool	Heated

Interior

Interior Features	Built-in Features, Ceiling Fan(s), Open Floorplan, Pantry, Primary Bathroom - Shower No Tub, Walk-In Closet(s)
Appliances	Induction Cooktop, Microwave
Heating	Central
Cooling	Central Air
# of Stories	1

Exterior

Exterior	Block
Lot Description	Other
Construction	Block

School Information

Elementary	Sunrise
Middle	Southwest

High Bayside

Additional Information

HOA Fees 235
HOA Fees Freq. Quarterly

Listing Details

Listing Office One Nation Real Estate



©2025 Space Coast MLS

The information being provided by the Space Coast Association of REALTORS® is exclusively for consumers' personal, non-commercial use, and it may not be used for any purpose other than to identify prospective properties consumers may be interested in purchasing. The data is deemed reliable but is not guaranteed accurate by the MLS.